

Youth support troops

Story below, pix on pg. 2

Clara Maass opens new ER

see page 3

Seven wrestlers head for States

see page 11

Belleville Times

Serving Belleville Since 1909

35°

82nd Year No.12

An Orechio Publication

Thursday, March 7, 1991



STUDENT MARCHERS...from School No. 3 walk down Division Avenue on route to the patriotic ceremony at the Veteran's Monument on Union Avenue.

Belleville youth shines in patriotic march

By Mike Lazorchak

Hundreds of Bellevillites turned off their televisions and put aside house chores for two hours this Sunday to march in a patriotic walk in support of American troops in the Middle East.

The event, designed to hear the voices of Belleville youth, was attended by students, parents, veterans and dignitaries of many levels.

Carrying yellow balloons, banners of thanks and American flags, the marchers walked from the high school east on Division Avenue and then north on Union Avenue to the veterans monument.

The crowd, dressed in shorts and

tee-shirts with the unseasonably mild weather which made a pleasant surrounding for the walk, gathered around the monument for a ceremony of songs and speeches.

Councilman Mario Drodz, who coorganized the walk with middle school teacher Jim Risoli, welcomed everyone to open the ceremony. Risoli then explained how the project was born.

"The idea came from talking about the war in class and interested students asking how they could become involved," Risoli said.

Karen Sibilia and Tony Loeffler performed an original song written by Loeffler, "I'm Proud to be an American for Freedom." The song mixed in a verse of "God Bless America" and the crowd joined in, setting the upbeat mood for the rest of the affair.

Sibilia played several other songs throughout the ceremony and each time thankful Bellevillites clapped and sang to the sounds of the acoustic guitar.

Student representatives from Belleville schools were then given the opportunity to express their views of the war.

The message they delivered was clear — praise for those who served, thanks for the cease fire and hope for a speedy return.

Jason Crawford, the nine-year-old who seized the attention of the town when he offered his allowance to pay for ribbons to show

support for the troops, surprised everyone again when presented the township with his grandfather's flag from World War II.

Drodz said the flag would be placed in the museum located in fire headquarters, 275 Franklin Ave.

Scott Horst, a sixth grader from School No. 9, evoked applause from the crowd with his speech.

"War — it's a dirty job but someone has to do it," Horst said. "But it showed we are a strong nation dedicated to freedom, not just here, but for everyone."

Sean Kimball, representing the high school, spoke of the shock of the war and the pride he felt for his brother who is serving in the Gulf and his father who served in Vietnam.

"I never thought a war would come in my lifetime," Kimball said. He concluded by saying his "heroes were his brother and father," then left the podium to hug his tearful mother.

Risoli and Drodz invited several veterans and dignitaries to speak including Senator Carmen Orechio, Assemblywoman Marion Crecco, mayor Marina Perna and Nutley Mayor John Kelly. All of them acknowledged the impressive role of Belleville youth in the ceremony.

Sibilia and Loeffler closed the ceremony singing "God Bless America" as much of the crowd joined hands and raised their voices.

New Jersey Transit reworks bus route; safer stops, better traffic flow sought

By Mike Lazorchak

Representatives from New Jersey Transit proposed to redesign the stops for the No. 13 bus route. The plan should create additional parking along Washington Avenue.

Jim McKenna, manager of urban and community relations for NJT, and Joe Marcello, project manager for bus stops, presented the plan to the town council during the March 4 work session.

"The proposal came as the result of a Route 13 Task Force created by NJT to 'cooperate and rationalize bus stops along the route through Nutley, Belleville, Newark, Irvington and Kearny,'" McKenna said.

Prior to the presentation, the two NJT representatives met with Police Chief George Lister to work on safety considerations for the proposed bus stops.

Jeff Lamm, public information director for NJT, said safety and traffic flow were the two reasons for the new plan.

"We are asking permission to put up bus stop signs to properly designate bus stops," Lamm said, "because without the signs buses are stopping at almost every corner."

"The No. 13 route is one of our most active, but also one of our most complained-about routes," Marcello said.

The plan would eliminate 11 stops on Washington Avenue and 11 stops on Joramelon Street.

The council thought most of the plan would benefit Belleville. However, several council members voiced opposition to the intersections of Washington Avenue and Joramelon Street as well as Union Avenue and Joramelon Street.

The two NJT representatives listened to the council and emphasized their flexibility and willingness to work with Belleville.

Councilman Jim Messina pointed out the danger of a bus stopping just before the intersection on Washington and then having to make a left turn onto Joramelon

from the right lane of Washington.

Further discussion of the problem brought the two sides to a resolution. Buses continuing north on Washington may stop before Joramelon and those turning onto Joramelon would have a new stop created on Joramelon.

No resolution was found for the Union and Joramelon intersection and the council will discuss the matter in more detail before making a proposal to NJT.

According to McKenna, NJT will pay for the installation of the signs and painting of the curbs, but Belleville will be responsible for covering the yellow curbs of the eliminated stops.

IKE grant funds in-service programs

Teachers sharpen instructional skills

By Mike Lazorchak

To help teachers remain current and effective with their instructional skills, the Belleville Board of Education has made in-service courses available for the district.

"Every district wants to improve instruction," assistant superintendent Michael Lally said.

"We want to do everything we can to bring our teachers up to speed on innovations."

Costs of the courses are funded

by the state Dwight D. Eisenhower Mathematics and Science Education Act, or IKE Grant.

According to Lally, the IKE is a non-competitive grant provided for staff development in science, math and computer programming.

Belleville received \$8,536 for the 1990-91 school year.

"We bring in the supervisors from those areas and tell them what funds they have available and then they can create a program," Lally

said.

Supervisor of math Michael Lemongello took full advantage of the funding and scheduled three courses for this year.

A five-week course in mathematics concepts, taught by Agnes Azzolino, attracted 18 teachers from all levels in the Belleville system.

One section of the course, targeted for grades K-8, showed the teachers some innovative, hands-on activities for teaching the metric system.

Azzolino demonstrated ways to involve the students in the lesson, rather than simply lecturing.

After making a one meter measuring tape, the students must measure their height, waist and neck in centimeters. These common measurements help the students visualize the metric system compared to the system of inches and feet they already know.

Future courses in math will focus on the High School Proficiency early warning and graduation tests and word processing in mathematics.

Fifteen teachers registered for the four-week HSPT course and 13 for the five-week word processing class.

"Through these workshops teachers are presented numerous teaching techniques, skills and concepts," Lemongello said.

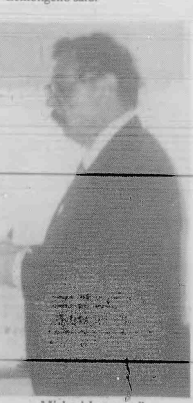
Lally also praised the in-service programs of science supervisor Bess Elstathou. The science in-service course taught teachers informative experiments with minimal cost and material.

"Our new science textbooks take

a hands-on approach and the in-service program helped us combine our instruction with our curriculum," Lally said.

Lemongello said this is the fourth year of in-service for the math department. Courses from other years helped teaching techniques with computer programs, geometry and problem solving skills.

"These workshops have been well attended by the teachers and the opportunity to implement what has been learned at these various workshops is encouraged and supported by the administration," Lemongello said.



Michael Lemongello

Planning board settles with Newark Light Co.

By Mike Lazorchak

The planning board agreed to a settlement with Newark Light Company concerning the proposed expansion of its Washington Avenue facility during a special meeting Feb. 28.

Residents of Floyd Street, behind the facility, still object to the variance and may seek legal action.

According to board attorney Tom DiBiasi, the two sides hammered out a resolution for the settlement based on progress made at the Feb. 14 meeting.

The settlement, reached during a closed litigation session of the board, responded to the appeal filed by Newark Light after its original proposal, made under the previous board, was denied.

DiBiasi said the resolution will be disclosed and open for public discussion at the March 14 meeting provided Newark Light follows proper channels of notification at least 10 days prior to the meeting.

"The applicant needs to notify all property owners within 200 feet of the affected premises and put notice in the newspaper," DiBiasi said.

Planning board chairman Richard Dombrowski commented on the settlement during a telephone interview.

"The board felt the addition to the Newark Light facility, with accommodations to the residents of the area, should be approved," Dombrowski said.

Dombrowski did not wish to reveal the details of the accommodations until the March 14 meeting.

During the Feb. 14 meeting conditions for approval of the variance were discussed for one and a half hours. Following that meeting, DiBiasi said the Feb. 28 meeting would be necessary to summarize those conditions and write them in resolution form.

The conditions released by DiBiasi following the Feb. 14 meeting included:

- Better buffering and screening.
- Better aesthetic appearance.
- Enclosure of the loading zone.
- Indoor waste disposal.

Attorney Steve W. Gruhn represents one group of residents not satisfied with the settlement.

"The residents are attempting, as intervenors in the lawsuit between Newark Light and the planning board, to restrain the board from overturning its prior decision," Gruhn said.

Gruhn hopes to take legal action before the March 14 meeting.



IS THIS A METER? Robert Silvera, a middle school math teacher, tries to measure a meter as Prof. Agnes Azzolino gets the measuring tape ready.

DiCaterino takes first in geography bee

Robert Di Caterino, a seventh grader at the Belleville Middle School, recently won the school's geography bee. Runner-up was seventh grader, Tiffany Parker. These students competed with 40 seventh and eighth graders in the bee. The school-level bee, at which students answered oral questions on geography, was the first round in the third annual National Geography Bee, which is being sponsored by National Geographic WORLD, the Society's magazine for children, Amtrak, and KUDOS snack.

The bee was kicked off the week of January 28 in thousands of schools around the United States, District of Columbia, and five U.S.

territories. The school winners, including (Robert) will now take a written test; up to 100 of the top scorers in each state will be eligible to compete in their state bee April 5.

The National Geographic Society with its co-sponsors will provide an all-expense paid trip to Washington, D.C., for state champions and their teacher escorts to participate in the National Geography Bee finals on May 22 and 23. The first-place national winner will receive a \$25,000 college scholarship; the second-place winner, a \$15,000 scholarship; and the third-place winner, a \$10,000 scholarship.

Belleville businesses get boosts from CERP grant

Belleville will be eligible to receive \$47,343 under the Community Economic Revitalization Program, a new grant designed to assist municipal economic development, the Belleville Times has learned.

Mayor Marina Perna and councilman Frank Noonan were scheduled to attend county executive Thomas D'Alesio's announcement concerning the program this morning in Newark.

The grant is intended to aid store owners in central business districts to improve their facades.

Other Essex communities participating in the program are Montclair, \$17,789; Nutley, \$56,884; Orange, \$25,785, and West Orange, \$36,526.

New York gallery features sculptures by Bellevillite

Sculpture by Maria Lupo of Belleville is on exhibit this month at Ledger De Main Galleries in New York City. The show, titled, "The Gallery as a Church," features two wall sculptures by Lupo, "Zotti" and "Red Figure." Rituals and the adornment of the human body are the focus of her work.

"I depict individuals as idealized images reflecting the various stages of life and death as ritualized by society," stated Lupo. "I see the image of the body constantly changing at worldly values and sacred traditions also change and evolve."

Born in Newark, Lupo received a BFA from Rutgers University and an MFA from Hunter College. She

developed her vision as an artist and appreciation of civilizations and rituals of the ancient world through studies in Cennia, Italy. Her work has been displayed throughout the United States including Walton Center for the Arts, Newton, PA; Michigan Gallery, Detroit, MI; Mercer Gallery, Rochester, NY; and the Newark Museum. She received an NJSCA Fellowship grant in 1985.

Currently, Lupo's photography can be seen at the Forum Gallery, Jamestown Community College, New York State. A solo exhibition, titled, UFO Landing Site...USA, is on view at ABW Gallery, Chicago through March.



CONGRATULATIONS...are given from Senator Carmine Orecchio, right, to Jason Crawford, left, following Crawford's presentation to the town during the ceremony.



UPLIFTING SONGS...for the ceremony were provided by Tony Loeffler and Karen Sibilla shown here singing "I'm Proud to be an American for Freedom."



THE PEN IS MIGHTIER THAN THE SWORD...was a lesson learned by Jason Crawford. After writing a letter to the TIMES, Crawford was invited to speak at the ceremony where he presented the town with his grandfather's flag from World War II.

Golden Comments

By Jim Golden

The big news in banking these days, along with new plans to reform the industry, is the long list of those eager to merge with the failed Bank of New England. Much of the proposal has met with resistance, but there's no argument with one premise of the plan: America has too many banks and the industry must consolidate. Most U.S. banks are small, local institutions, which depend heavily on their hometown economies. As a result, they have gotten into financial trouble because of a failure to diversify assets and an inability to keep down borrowing and operating costs. "Right now, we've got about 13,000 banks," says David Beim of Columbia Business School, "and that's at least 12,000 more than we need."

The financial-services industry will shrink in the 1990s, as small-town banks become branches of big-city banks and big-city banks merge to become nationwide banks. "In that consolidation I think you'll get more competition and better service for consumers," says Democratic Rep. Charles Schumer of New York. Salomon Brothers analyst Thomas Hanley believes that the first major bank merger will be "the catalyst that radically changes the landscape of American banking as the top 15 players start to pair off."

Some bank marriages, like the one involving the battered Bank of New England, look more like shotgun weddings as the industry seeks a quick fix for paltry earnings and a worrisome capital crunch. Last year, profits for the nation's top 35 banks fell 28 percent, making it the worst year for banking since the 1930s. Because of deteriorating loan portfolios and undermanned capital bases, most U.S. banks are scrambling to raise cash. Cutting costs can help. And a sure-fire method for saving on bank overhead is to merge. The savings translate into higher earnings, which make it easier to sell more shares of stock. As banks consolidate, a third or more of the country's 1.5 million bank employees could lose their jobs — not a politically palatable prospect.

Nonetheless, banking authorities support mergers as a way to revive a decimated industry. In

announcing his bank-reform plan, Treasury Secretary Nicholas Brady complained that America's banks have lost their worldwide competitive edge. Indeed, U.S. banks have three times the operating expenses per dollar of assets compared with Japanese banks. Mergers could make American banks as strong as some of their international rivals. Britain has just 550 commercial banks, Canada has 65 and Japan has fewer than 150. Because there are fewer banks in these countries than in the United States and because they are mostly national, they can more safely spread their risks and allocate capital more efficiently to growing industries. In fact, there have been no big bank failures in these nations.

Banks could be made safer were Washington to withdraw deposit insurance coverage if banks made risky investments with the public's money. Discipline must be imposed by government. Banks have a special public duty that sets them apart from other businesses. A balance must be struck between their entrepreneurial drive and fiduciary responsibility. Government regulation — imposing capital ratios, loan diversification criteria and management oversight — is the main way of ensuring balance.

We now have a hybrid policy that satisfies no one. Government regulation is extensive but can be highly ineffective. Market discipline is exerted erratically. The stocks and bonds of financial companies are whipsawed by shifts in market judgments. But discipline is heavily watered down by the behavior of most depositors, whose money is insured by the government.

The dilemma is plain: The United States is unwilling to accept a financial framework without deposit insurance, but true market discipline is incompatible with deposit insurance. The irony is that despite a decade of deregulation, major banks are now more dependent on the government for their survival than ever.

These are the views of Henry Kaufman, President of Henry Kaufman & Co., a New York Money Management and Financial Consulting Firm.

Pi Delta Phi inducts Galasso

Traci Galasso, a student at Montclair State College, has been inducted into Pi Delta Phi, French Honor Society.

A French major, she has been on the dean's list for six consecutive semesters. A graduate of Holy Family School, Nutley and Belleville High School, she is the daughter of James and Patricia Galasso of Belleville.

Bellevillites attain fall dean's list

Five Bellevillites were named to the dean's list for the fall semester at Jersey City State College.

They are Victor M. Bian, Oscar Figueroa, Stacy McCarthy, Diane Schroll and Antonia Zangari.

Students on the dean's list attained a semester average of 3.5 or higher.



Traci Galasso

Ombalsky pair make dean's list

Sandra and Joseph Ombalsky has been named to the dean's list for the fall semester.

Sandra, a senior at Rutgers, Newark, has a grade point average of 3.5. Joseph, a freshman at Rutgers, New Brunswick, has a grade point average of 3.65.

They are the children of Joseph and Carole Ombalsky of Belleville.

NUTLEY FOOT CARE CENTER
Dr. Robert Lardiere
Surgeon • Podiatrist
"Complete Foot Care For The Entire Family"
230 Centre Street
Nutley
667-5070

Meyer's
Cafe • Restaurant
Have Your Next Affair
In Our Brand New Dining Room
• Graduations • Meetings
• Showers • Birthdays • Funerals
Sunday Buffets
277 Franklin Ave. • Nutley
667-8587

Plaza Bootery
Quality Shoe & Handbag Repairs
MOST WORK DONE WHILE YOU WAIT
483 Franklin Ave., Nutley
667-8964

BIRPPY THE DEPARTMENT OF SPECIAL SERVICES
Belleville Public Schools
Announces
ASSERTIVE DISCIPLINE WORKSHOP FOR PARENTS
TUESDAY, MARCH 12, 1991
7:00 P. M. - 9:00 P. M.
Belleville High School Auditorium
100 Passaic Avenue
Meeting Open to all Parents, Staff Members, Relatives
(No Children, please!)

(REFRESHMENTS TO BE SERVED)

Assertive Discipline techniques offer a practical, common-sense, step-by-step approach to handling your child's behavior. No need to feel sidetracked, angry, guilty or fatigued! You can learn to praise and acknowledge appropriate behavior. Find out ways to deal with everyday problems encountered by parents:

- handling children who are challengers and limit-testers
- staying focused on the issue at hand
- dealing with an arguer
- reacting when a child presses our "hot" emotional buttons
- speaking and behaving in ways which undermine authority

(This course is most appropriate for parents of children pre-school through Middle School Years.)

Presentation by: RAY CORTESE, M.A., C.A.C., Administrator, NEDAC (New Jersey) Counseling Center, and ANITA PERIN, M.S.W., Administrator, NEDAC (Livingston) Youth Service Bureau. Both are experienced presenters and have had extensive experience in conducting young people.

BRACADABRA KIDS
Infants & Children's
Clothing Sizes 0 - 16
ACCESSORIES & FURNITURE
217 Franklin Avenue
Nutley • 284-1004

Cicchino achieves dean's list at RWC

Susan E. Cicchino of Belleville was named to the dean's list at Roger Williams College, Bristol, Rhode Island, for the fall semester. The college is an independent, coeducational college of liberal arts and selected professional programs and enrolls 3,500 full and part time students in 32 majors.

Katharine Gibbs
Since 1911 A Leader
In Business Careers
GIBBS ANNOUNCES THEIR "SPRING PROGRAMS"
DAY CLASSES
• Information Processing
• Executive Secretary
• Executive Secretary (3 Mo. Program)
EVENING CLASSES
• Administrative Assistant
• Computerized Bookkeeping
• Hotel & Restaurant Management
• Secretarial (6 Mo. Program)

CALL TODAY
201-744-6967

ACT NOW. CLASSES ARE FORMING!

KATHARINE GIBBS
HOW TO GET AHEAD IN BUSINESS
83 Plymouth Street, Montclair, NJ 07042

Name _____ Phone (H) _____ (W) _____
Address _____
Program of Interest _____ YR. HS GRAD _____

Don't Let Uncle Sam Keep More Than He's Got Coming
We've studied the new tax laws carefully so we can offer you the best possible service in preparing your income tax return.

Paul Goldman, CPA

- Personal Income Taxes
- Self-Employed's Welcome
- Tax Planning
- New Businesses
- Corporate Taxes
- Estate Accounting

Take advantage of our experience
Call For Appointment
759-7791

The Only Insurance Agency You'll Ever Need

- Auto • Trucks
- Motorcycles • Boats
- Home • Tenant • Life
- Health • Business Policies
- Construction Packages

All Forms of Insurance

TRIOISE INSURANCE AGENCY
"Where Quality Coverage Counts"
972 Washington Avenue, Belleville
759-4100
Mon. - Fri. 9AM - 5PM • Sat. 9AM - 12PM

Emergency Room opens at Maass

Clara Maass Medical Center opened a modernized emergency room Feb. 26 designed to give patients more effective immediate care.

The new ER offers an increased amount of services including an X-ray room, shower facilities for chemical injuries, a pediatric treatment room and more monitored beds.

"The main thing is we made the hospital more efficient," Clara Maass director of ambulatory services Scott Wallace said.

The medical center is also developing a "fast-track" program to speed up attention for "routine emergencies."

"Patients who come in with sprains and bumps should not have to wait hours for treatment," Wallace said, "and fast-track should alleviate that problem."

Ward 2 meeting set for March 13

Residents of the 2nd Ward are invited to attend the regular monthly meeting, run by Deputy Mayor Frank Caputo, March 13. Caputo has invited Chief of Police George Lister and Det. Capt. Mike Petrillo to appear as guest speakers. The meeting will be held 7:30 p.m. at the Recreation House, 407 Jorammon St. Refreshments will be served.

Five citizens needed for advisory council

The Vocational Advisory Council of the Belleville Board of Education is seeking five citizens willing to participate in a worthwhile civic experience.

Names of interested persons should be submitted to Michael Nardello, Superintendent of School, 190 Corlandt St. More information may be obtained by calling 450-3507.

Senate approves Orechio school monitoring bill

The Senate on Thursday approved Senator Carmen A. Orechio's bill that would enable school districts to request the state to complete school-monitoring scheduled to begin this year.

The bill, S-3216, is necessary because of recently enacted school-monitoring requirements that delay most monitoring until 1993, said Senator Orechio (D-Essex).

"We have some schools that have spent countless hours and resources preparing for the comprehensive monitoring process,"

Senator Orechio said. "It is only fair to these schools that we allow the Department of Education to conduct monitoring at these schools now rather than wait another two to three years."

The new monitoring requirements went into effect in January. Overall, about 80 schools were scheduled to undergo monitoring between Jan. 1 and July 1 of 1991, the Department of Education reported, including some in Essex County. The Senate approved the bill 34-0.

Don't Miss The "TRAVEL TIME" Boat!

A Cruise for ALL Reasons:

- Singles • Honeymoon Packages
- Celebrity Sports • Disneyworld
- Unique "Theme Cruises" • Seniors
- Affinity Groups • Business Seminars
- Last Minute Discounts

M/S TRAVEL TIME
1-800-350-4786
(201) 736-5550
Contact: Jay Taranino

Check Our Attractive Low Rates For 1991 Sailings

Make 1991 the year that you take that long awaited dream vacation!

travel time
ESSEX GREEN PLAZA
WEST ORANGE, N.J. 07052
NJ (201) 736-5550
NY (212) 285-9041
Fax (201) 736-8919



RIBBON CUTTING...ceremony for the new emergency room at Clara Maass Medical Center. From left: Peter Amira, M.D., John Calandriello, senior vice-president, Robert Ezyoyl, executive vice-president, Kerri Johnston, director of professional services, Cono Pecora, M.D. and president of medical staff, Stuart Blenker, M.D. and director of emergency services, Robert Curtis, president and CEO, Mary Morrison, senior vice-president.

Nucera testimonial dinner May 1

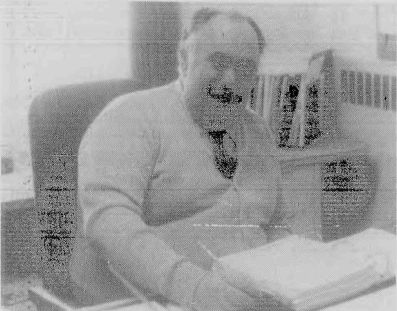
A testimonial dinner for George Nucera, retired vice principal of Belleville High School, will be held 7 p.m. May 1 at the Chandelier Restaurant, Belleville.

Nucera retired Aug. 30 after 35 years in the Belleville schools but ill health required the postponement of the dinner to a later date.

A graduate of Montclair State, Nucera served a tour of duty in the United States Air Force, attaining the rank of sergeant first class. He earned a masters degree plus many additional credit hours and served in many positions during his years in Belleville, including director of vocational guidance, director of

visual aids, guidance counselor, middle school vice principal, director of Title 1 grants and principal of School 4 before assuming the vice principalship of the high school. As president of the BEA and president of the Administrators Association, he was involved in negotiating contracts for the teachers, custodians and administrators. He also served as assistant football coach.

Tickets to the dinner are \$30 and reservations are required by April 24. Make checks payable to the Belleville Administrators Association-George Nucera Dinner and sent them to Mr. Frank Scelba, Belleville High School, 60 MusicArt Dept., 100 Passaic Ave., Belleville, 07009. For more information, call 450-3564.



George Nucera

ART GALLERIES
ROYALE
500 STUYVESANT AVE.
LYNDHURST, N.J.
438-3075

OIL PAINTINGS
Large Selection On Display
Largest Gallery in New Jersey
Lithographs & Prints
Photos Painted on Canvas
Stock & Custom Frames
Complete Framing Department

Lawrence Calabro, CPA
Thomas M. Kotulak, CPA

- Individual Tax Preparation • Corporate Tax
- Tax Planning • Accounting
- Estate Planning • Financial Planning
- Complete Small Business Accounting Services

Reasonable Rates
Call 661-2223
386 Franklin Ave. Nutley

PARISO BROS. Inc.
FURNITURE

SALE

\$249⁹⁵

This 5-Piece Set as shown
Country Oak Finished Dinette Set
36 x 36 x 48 carefree laminated top
plus 4 matching metal chairs.

FREE PARKING IN FRONT OF STORE
16 WASHINGTON AVENUE, BELLEVILLE
Now Showing 2 Floors of Dinettes 759-2273

EASTER BUNNY PICTURES MAR. 23

PHOTO QWIK COLOR LAB
361 FRANKLIN AVENUE
BELLEVILLE • 751-3456
(CHANNEL SHOPPING CENTER)

- ☐ PORTRAIT STUDIO
- ☐ I.D. & PASSPORT
- ☐ HOME MOVIES TO VIDEO TAPE

WE BUY OIL
CONVERTED TO GAS?
WE SPECIALIZE IN FUEL OIL TANK CLOSURES

647-9297
ANCO TANK & PUMP

Regal Carpet WHOLESALES
Family Owned and Operated Since 1957

Plush DuPont Certified STAINMASTER

ONLY \$12⁹⁹ sq. yd.

Style No. 98931 Company Installed Warrant

Many Styles & Colors Available
Shop At Home Service
Brand Name and Buy Wholesale
CALL FOR ADP.
Home Design Center 1201 748-6722
Belleville, N.J. 07003 Open 10:00 A.M. - 6:00 P.M.

KITCHENS BY VERSA

We can supply your needs...
AT THE RIGHT PRICE!!!
Bring us your kitchen estimate from
Chanel Lufber, Ricketts,
Mr. Good Buys or Home Depot
AND WE WILL BEAT IT.

Dinner for two with the purchase
of a kitchen in excess of \$1,000.00

VERSA SUPPLY CO.
30 Wilson Ave., Newark, NJ
Tel.: 589-3355
OPEN UNTIL 6 PM TUESDAY AND THURSDAY

THE TRUST COMPANY GIVES YOU

NEW JERSEY'S BEST CD

Plus

A CRYSTAL HEART FOR FREE!

TAX-DEFERRED 12 MONTH CD

7.00% ANNUAL RATE

The Trust Company of New Jersey is now offering a special high rate on a new short-term Certificate of Deposit. Just deposit \$1,000 or more into an E.D.I.C. insured 12 month CD and receive the best CD in the state plus a FREE imported, cut crystal heart. This offer can't be beat because your interest is **TAX-DEFERRED** — any interest earned will not be taxed until 1992. Just mail in the coupon below to lock in this high rate and come in to any of our 38 branches to pick up your free gift.

Actual Size 4x4 Crystal Heart Gift One Gift Per Customer

CALL TOLL FREE 1-800-223-BANK

THE TRUST COMPANY OF NEW JERSEY

"The healthiest billion dollar bank is The Trust Company of New Jersey."

— Business Journal of New Jersey

38 Branches in Bergen, Essex, Hudson, Middlesex, Monmouth, Morris and Passaic Counties
Executive Office Journal Square, Jersey City, NJ • Assets \$2 Billion

The Bank With Heart Since 1896 **Member F.D.I.C.**

NAME _____ TITLE _____
ADDRESS _____ CITY _____ STATE _____ ZIP _____
PHONE () _____
MAIL TO: The Trust Company
25 Journal Square
Jersey City, NJ 07310
ATTN: Marketing Dept.

Special Security Number _____ Birthdate _____
Home Phone _____
I, _____, hereby certify that the Trust Company's Special Security Number provided is true, correct and complete and that I am not subject to back end withholding under the IRS Code.

Signature _____
Date _____

Mail to: The Trust Company
25 Journal Square
Jersey City, NJ 07310
ATTN: Marketing Dept.

Interest not compounded on a simple interest basis and is paid at maturity. There may be cash market penalties for early withdrawal. Rate quoted as an illustration only. Minimum deposit \$1,000.

OUR OPINION

Giving and Forgiving

What makes life worth the living
Is our giving and forgiving;
Giving tiny bits of kindness
That will leave a joy behind us,
And forgiving bitter trifles
That the right word often stifles,
For the little things are bigger
Than we often stop to figure.
What makes life worth the living
Is our giving and forgiving.

Thomas Grant Springer

Rhetoric is an art

Webster's New World Dictionary defines rhetoric as "the art of using words effectively."

Rhetoric is an art — and should be treated like one — something Belleville has neglected for some time. The people of Belleville have enlisted the use of rhetoric for every cause from lack of parking to increased property taxes.

"The Rhetoric of Aristotle" offers some valuable advice on the use of the noble art of persuasion. Well meaning advice that could make living in Belleville a little more bearable.

Aristotle explains the "arousing of prejudice, of pity, of anger and the like feelings in the soul, does not concern the facts..." and should not be used to make decisions. To evoke these feelings is to blatantly misuse the art. Those who are put into a position to make decisions should not be influenced by emotions. As Aristotle said, "One might just as well make a carpenter's rule crooked before using it as a measure."

Rhetoric is designed to determine truth. Any other end achieved by means of rhetoric only destroys its value. Belleville has destroyed the value almost beyond repair.

Rhetoric, like propaganda, is only effective if people listen. The constant misuse of the art in Belleville slowly closed ears over the years. People developed an immunity to rhetoric.

It is time to open the collective mind of Belleville, and listen, once again.

When using rhetoric, success is determined by using it correctly, not by material gains. The proper use of persuasion will reap its share of success, because the art pursues the truth.

Yes, Belleville, rhetoric is an art, and when used correctly it is an invaluable one.

A proud day

For all those who chose not to attend the patriotic walk held on Sunday you missed the chance to see Belleville at its best.

The glorious weather provided the backdrop for day of honor and thanks for all Americans, but in particular Bellevillites, serving our country abroad. The sea of yellow balloons and American flags marching down Union Avenue was a sight to make every Bellevillite proud.

The town should also recognize and take pride in its students, who despite the anxiety of speaking in front of such a large crowd, clearly expressed their opinion of the war.

An important message was also delivered by the various veterans of past wars who spoke with such devotion about their friends, our countrymen and women, who gave their lives to protect our freedom. It is the same message inscribed on the Veterans Monument on Union Avenue, "Lest we forget."

Be certain to never forget. Take your own walk down Union Avenue, look at the monument, and read the message.

Events like this walk possess an inherent ability to bring a community together, another message worth remembering.

Letters Welcome

The Belleville Times welcomes letters, preferably 300 words or less, from readers. To be considered for publication, letters must be typed or legibly handwritten and must include the writer's address and daytime telephone number. Unsigned letters will not be published and names will not be withheld, unless publication would jeopardize the writer's personal or job security. We reserve the right to edit for length or clarity.

YOUR OPINION

Flood tunnel opposed

to the editor:

The Essex County Board of Freeholders appear to have one member who is confused about the Passaic River Flood Tunnel. I attended the February 20, 1991 Freeholders meeting at which the Army Corps of Engineers made a presentation on the flood tunnel project. It was surprising to learn that the Corps of Engineers appeared on the invitation of only one freeholder, James Cavanaugh.

Over the past five years I have personally attended numerous informational meetings regarding the flood tunnel project, mainly because my family and I were born and raised in a flood prone area of Belleville, along the Passaic River. After digesting this information and reading the Corps of Engineers' Environmental Impact Statement, it is obvious that the flood tunnel solution was rammed through by one Congressman, who is only catering to a few special interest groups.

As opposition to the flood tunnel grew, amendments were added to the original project, which not only added to the extreme costs of the project, but made the plan even more unrealistic and impractical. Despite the fact that the Essex County Freeholders passed three resolutions opposing the flood tunnel and Essex County Executive Thomas D'Alessio issued several press releases that stated he was unequivocally opposed to the flood tunnel, Freeholder Cavanaugh has now asked the Corps of Engineers for clarification. Cavanaugh admitted openly at the meeting he owned a contracting business. Is he now wavering in his opposition to the flood tunnel for personal, short term, economic reasons?

As a citizen of Essex County and Belleville, I am deeply concerned that this project is ill conceived and unnecessary. And as our economy moves further into a recession and our taxes keep escalating who can afford to pay the incredible taxes this flood tunnel will cost all taxpayers of New Jersey.

Victor M. Canning

B.A.S.E. sends thanks

To the editor:

On behalf of the Belleville Alliance for Substance Education, Inc. (B.A.S.E.) executive board and myself, I would like to extend a special thank you to Mary Ann Lopreato, chairperson of our tricky tray which was held on February 8, 1991, and to Francine Pascheria, co-chairperson, and their committee workers who coordinated trays — thank you. Also, all who baked and worked for that evening's event. All these dedicated people helped to make the evening a success.

As the year progresses, I am most touched by the heart of the people of Belleville. Their sincerity and love of the community and the children of our township reinforces my dedication to the work we have endeavored. Their generosity to our cause, "Drug Free Community," is very apparent.

May I wish all in the following weeks to come the joy of Passover and the peace of the risen Christ on Easter.

May God bless you.

Barbara Cialese
Chairperson

Belleville Alliance for Substance Education

No taxes for God

To the editor:

How much were taxes increased in 1990 because of the tax exemption placed upon church owned real-estate? Hold it a minute! Why should you even have to pay for real-estate owned by a religious organization in the first place! The taxpayer should not be mandated to finance religious institutions. The property taxes placed upon that real-estate is the concern of the owner. Religion is an individual's private affair and the burden of providing financial support should not be imposed upon everyone. Unfortunately, because of a blanket tax exemption on church owned property, that is exactly what you as a taxpayer are required to do.

Your individual property taxes are based upon the amount it will cost the town to provide essential services. Your individual taxes are based upon an equalization formula which involves the total number of land in the town and the value of it.

In 1990, Belleville needed to raise \$44.13 million from its real-estate owning residents to pay for the services which were provided to everyone, including the church. Church owned property in Belleville was valued at \$8.147 million. That figure, when applied to the tax rate equaled \$762,000. Seven hundred sixty two thousand which you now have to pay. Why? Because the church is tax-exempt.

The amount of money involved is not the main issue. Let me emphasize my primary grievance. Everybody, should not be forced to pay the taxes which the church themselves should be paying. You own land, you pay taxes. Church owned property is mainly used for religious purposes. Religion is a private affair. If you want your particular church, pay for it yourself.

For those of you who might be interested in the figures, Belleville property owners were each required to pay 1.7% more in 1990 in order to satisfy the \$762,000 lost due to the tax exemption. The town hardest hit in Essex County was Caldwell. The individual tax increase was 22.4%. Overall, in Essex County, the total value of Church owned property was \$468.7 million, not including their cemeteries and hospitals. That's \$40.3 million which the taxpayer had to fork over for "their" property.

Allyn Ciccone

Best wishes to Servidio

To the editor:

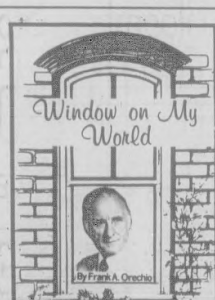
I was saddened to read in last week's Belleville Times the letter from Democratic County Committeewoman Lois Servidio stating that she planned not to seek re-election to the position of District Leader.

Even though Lois is a member of the Democrat party, she has earned the respect and admiration of both Democrats and Republicans.

The residents of the Valley, and Chairman Prosperi, will be hard pressed to find someone to represent their district as well as Lois. On behalf of the Republican party, I wish her much success and happiness in all her future endeavors.

Richard P. Yanuzzi
Chairman

Belleville Republican County Committee



• NEW JERSEY SENATOR John Russo said it isn't so — that is, his appointment to the New Jersey Sports and Exposition Authority. Reading between the lines of a follow-up story, it appears that the able and powerful senator will eventually be a member of the Sports Authority. Russo will bring a bushel of talent to the Sports Authority.



John Russo

• ESSEX COUNTY PROSECUTOR Herb Tate's five-year term will expire in May. Tate was appointed by former Governor Thomas Kean. He is a member of a very distinguished Essex County family. As Essex County Prosecutor for the past four and a half years, he has served with distinction. If the Governorship had not changed hands, more than likely, Tate would have been reappointed as County Prosecutor.

The Afro-American community of Newark, led by Newark Mayor Sharpe James, is insisting that Essex County

either have a black prosecutor or a black sheriff. The sheriff's job was given up by Tom D'Alessio upon his election as Essex County Executive. The acting sheriff is Undersheriff Armando Fonturo.

Essex County Democrat Chairman Ray Durkin will have a substantial input as to whom Governor Jim Florio will appoint as prosecutor. Durkin controls the Democrat ballot line, and consequently, normally, controls the selection of the Democrat nominees.

If Florio appoints a prosecutor from the white race, and the Democrat sheriff candidate is a member of the white race, the blacks will field a candidate under the Republican banner, hoping to be able to "teach the Democrat Party a lesson."

Accommodation always served the best interests of the Democrat Party. In the present circumstances, accommodation is necessary to retain the rainbow spectrum which represents the Democrat Party.

Of the seven Freeholders, three are Afro-Americans. Of the four Essex County State Senators, two are Afro-Americans. Mayors of the largest cities in Essex County are Afro-Americans.

We think the Afro-Americans have flourished under the leadership of Essex County Democrat Chairman Ray Durkin — and based upon history, they will continue their onward and upward march to power and influence under the Democrat Tent forged by a resourceful Durkin.

Durkin can settle the Afro-American enigma by convincing Herb Tate that his philosophy is more in line with the Democrat Party, and thus, he is well qualified by philosophy and ethnic traditions to be a bona fide Democrat.

A Democrat Tate prosecutor would retain the services of a competent public servant, and at the same time, provide a sure-fire solution to a wrenching problem confronting the Democrat leadership.

• A DECISION by the United States Supreme Court two years ago is resulting in a challenge to the New Jersey Republican Party. At that time, the Supreme Court ruled that political parties are permitted to "organize their internal affairs without governmental interference." In other words, the State Legislature cannot interfere with the details of political party organization. The G.O.P. leaders last year decided that county committee members could serve a term of two years instead of the old established one year term. Moreover, county committee members are no

longer prohibited from endorsing candidates. The old rule was a sham anyway. Party leaders from the grass roots up always were able to find a subterfuge, to circumvent the law. Now they can do it legally.

• ESSEX COUNTY EXECUTIVE Tom D'Alessio reports the state cap law which limits funds that could be raised by the Essex County Executive and Board of Freeholders does not apply to the Essex County Judiciary which consists of 57 Essex County Superior Judges. Neither does the law apply to the Office of Surrogate, Prosecutor, Sheriff and County Clerk. The heads of those agencies could make application to be exempt from the caps since they are all constitutional officers.

Meanwhile, home at Tom D'Alessio's ranch, 450 employees received their pink slips from D'Alessio. While he was laying off employees, the Judiciary hired 90 additional employees, and recently made a request for another 70.

• THE OLD ESSEX COUNTY COURT HOUSE has been declared an Historic Site. It will take \$20 million to repair the Court House. While the old Court House is under repair, the Judiciary is requesting it be transferred to the Gibraltar Building in downtown Newark, with a ten-year lease costing \$5 million a year, plus the cost of parking at \$165 a month per car for a thousand cars — adding another \$2 million a year to the cost of County government.

Many times, Senator Carme Orecchio introduced a bill requiring the State government to pick up the cost of the Judicial system, since the Judiciary is a State agency. Orecchio's bill originally passed, but was vetoed by then Governor Tom Kean. Efforts are currently under way to have the State fund the cost of operating the court system, thus saving local taxpayers substantial taxes.

County Executive D'Alessio makes the point that Essex County can no longer be considered a county consisting of substantial suburban communities and a principal city — Newark. Today, Essex County must be viewed as one large urban area — D'Alessio further suggests that students of government should look upon Essex as the State of Essex's government is that large.

• PRESIDENT GEORGE BUSH is America's modern hero. The decisive United States victory over Iraq was due to Bush's leadership and determination against all odds. I just hope post-war deliberation doesn't lose for America the gains won by the gallantry of our men and women in uniform.

Belleville Times

Serving Belleville Since 1909

(1) SPN 049-220

Publisher: Frank A. Orecchio
Assistant to the Publisher:
Arnie Ziem
Published Every Thursday
At 155A Washington Ave.
Belleville, N.J. 07109

Second Class Postage Paid
At Newark, N.J.
Postmaster: Send address changes
to: The Belleville Times,
155A Washington Ave., Belleville, N.J. 07109

Annual Subscription \$14.00
Senior Citizens \$ 7.00

759-3200
Fax: 667-3904

All departments call:
759-3200

Grant awarded to library

The New Jersey Committee for the Humanities has approved the grant application of the Belleville Public Library and Information Center for a maximum of \$200 for ten lectures and discussions by scholars in 1991 on Wednesdays at 1 p.m. at the library in the Trustees' Room. The library will match the grant with in-kind services and books for the series. The theme of the series, "Last for Life," was developed by Adrea Cohen, assistant library director, who wrote the grant and is project coordinator, and Frank De Lisi, Belleville Humanities' scholar. They will discuss the grant on the March program of "Celebrate Books from the Belleville Public Library" on WBHS.

Library Director David S. Bryant will oversee the project with Shirley Leardo, fiscal agent. Betty Oakley, staff member, also assisted with the grant. Registrations will be taken by Carrie Stahl and Barbara Dombrowski of the Circulation Staff.

The series will commence with Irving Stone's "Last for Life" April 3, a lecture given by George Moore, Instructor, Hunter College, followed by a lecture and discussion of Homer's "The Odyssey," by Frank De Lisi, former high school English department chair and Rutgers University Instructor on April 17. The third lecture and discussion on May 1 will be offered by Dr. Edward Huberman, Professor Emeritus of English and American Literature, Rutgers University, on "Don Quixote." The fourth lecture will feature Dr. Robert Gold, Professor of English, Jersey City State College, who will discuss William Shakespeare's "Twelfth Night," on May 15, while the fifth lecture will be given by Dr. Edward Huberman, Professor Emeritus of English and American Literature, who will discuss "Taming of the Shrew," by William Shakespeare on May 29.

Dr. Barry Jacobs, Professor, Montclair State College, will lecture on and discuss "Anna Karenina," by Leo Tolstoy on Sept. 25, while Dr. Robert Gold, Professor of English, Jersey City State College, will lecture on and discuss "Great Expectations," by Charles Dickens on Oct. 9.

Dr. Barry Jacobs will also lecture on and discuss "The Old Man and the Sea," by Ernest Hemingway for the eighth lecture on Oct. 23, while Dr. George Moore will lecture on and discuss "Sophie's Choice," by William Styron on Nov. 6 for the ninth lecture. The final lecture will be a lecture on a biography of Christopher Columbus by Gianni Granzotto by Frank De Lisi on Nov. 20 in preparation and as an introduction for the celebration of the Columbus Quincentennial Celebration in 1992.

Try a best seller

Best sellers in paperback at the Belleville Public Library and Information Center include "Dances With Wolves," by Michael Blake, "The Silence of the Lambs," by Thomas Harris, "A Ruling Passion," by Judith Michael, "Devices and Desires," by P.D. James, "Caribbean," by James A. Michener, "Harmful Intent," by Robin Cook, "The Conquest," by Jude Deveraux, "Mercy," by David Lindsay, "Talking God," by Tony Hillerman, "Mystery," by Peter Straub, "Foucault's Pendulum," by Umberto Eco, "Paint the Wind," by Cathy Spellman, and "The Anastasia Syndrome," by Mary Higgins Clark. Other in-fiction include "From Beirut to Jerusalem," by Thomas Friedman, "Suddam Hussein and the Crisis in the Gulf," by Judith Miller, "Now Without My Daughter," by Betty Mahmoody, "The Road Less Traveled," by M. Scott Peck, and "Codependent No More," by Melody Beattie.

If the book is not on the shelf, the library staff will be glad to reserve it for you for 25 cents per title.

BOOKMARKS

By Adrea Cohen



In 1991, the Year of the Lifetime Reader, proclaimed by the Library of Congress, Adrea Cohen, Assistant Library Director, and Frank De Lisi, Humanities' scholar, urge you to attend the upcoming humanities' series, entitled "Last for Life" at the Belleville Public Library and Information Center, on Wednesdays at 1 p.m. from April 3-Nov. 20. The ten session lecture and discussion series has been funded in part by a matching grant from The New Jersey Committee for the Humanities. Call the library at 450-3434 to register.

For the business minded

Books for those interested in business that have recently been added to the collection of the Belleville Public Library and Information Center include "Conran Design Guides for the Home Office," by Jeremy Myerson and Sylvia Katz, "Creativity in Business: A Practical Guide for Creative Thinking," by Carol Kinsey Goman, "The One-Person Business," by Mary Jean Parson, "The One Minute Manager Meets the Monkey," by Kenneth Blanchard, and "Risk Taking," by Herbert S. Kindler, Ph.D.

Calendar of Events

March 7 — Anna Rosa Mazur will deliver a lecture on crocheting at 10:30 a.m. at the Belleville Public Library and Information Center, 221 Washington Avenue. Call the library at 450-3434 to register.

Episode V of the PBS Civil War Series will be shown at 1 p.m. at the Belleville Public Library and Information Center, 221 Washington Avenue. Call the library at 450-3434 to register for the film.

Rutgers University will provide a free tax service from 6 to 9 p.m. at the Belleville Public Library and Information Center, 221 Washington Avenue. Call the library at 450-3434 to make an appointment for the service.

March 11 — A Winter Reading Club Party will take place from 3:15-3:45 p.m. at the Belleville Public Library and Information Center, Shafter Branch Library, 30 Magnolia Street.

March 12 — A Crocheting Class for Beginners and Intermediates, taught by Anna Rosa Mazur, will take place from 1:03 p.m. at the Belleville Public Library and Information Center, 221 Washington Avenue. Call the Circulation Desk at 450-3434 to register.

A preschool for children at 10:30 a.m. and a toddler story hour at 9:30 a.m. will take place at the Belleville Public Library and Information Center in the James J. Cozzarelli Jr. Children's Room.

Mary Springer of the Belleville Health Department will offer a special program on the Heimlich maneuver and first aid at 10:30 a.m. at the Belleville Public Library and Information Center.

The AARP will provide tax assistance from 10:00-3:00 p.m. at the Belleville Public Library and Information Center. Call the library at 450-3434 to make an appointment, which is required.

March 13 — A toddler story hour at 9:30 a.m. and a preschool story hour at 10:30 a.m. will take place at the Shafter Branch Library, 30 Magnolia Street. Call the library at 450-3438 for further information.

Dr. George Moore, humanities scholar, will provide a lecture and discussion of "Notes of a Native Son" at 1 p.m. at the Belleville Public Library and Information Center. Call the library at 450-3434 to register for the lecture. Books are available at the library's Circulation Desk from Barbara Dombrowski and Carrie Stahl.

GIANT JEWELRY
RETIREMENT SALE

Our Bloomfield Store Closes Forever On March 31st.
STOREWIDE SAVINGS OF 30%—50%
Floor to ceiling, wall to wall—Nothing Held Back

ART CARVED
WEDDING BANDS
50% OFF
In Stock Brands Only

Goldman
Wedding Bands 50% OFF
In Stock Brands Only

30% OFF Lenox China
Waterford Crystal
Llardo Figurines

SAVE
ALL DIAMOND JEWELRY
30%-50% OFF
A) Diamond Tennis Bracelet 1 ct. "S"
Reg. \$925.00
NOW \$599.00
B) Diamond Engagement ring enhancer
Reg. \$285.00
NOW \$142.00
C) Diamond stud earring .40 ct total
Reg. \$670.00
NOW \$399.00

SAVE
ALL COLORED STONE JEWELRY
40%-50% OFF
A) Diamond & Blue Topaz cocktail ring
Reg. \$190.00
NOW \$75.00
B) Diamond & Sapphire cocktail ring
Reg. \$150.00
NOW \$75.00
C) Diamond & Emerald cocktail ring
Reg. \$180.00
NOW \$149.00
D) Diamond & Emerald pendant
Reg. \$300.00
NOW \$149.00

SAVE
ALL SOLID 14K JEWELRY
50% OFF
A) Artisanal Wedding Bands in stock
B) Goldman Wedding Bands in stock
C) 14K Solid Rose Bracelet
Reg. \$109.00
NOW \$52.50
D) 14K 16" Horseshoe Necklace
Reg. \$180.00
NOW \$70.00
E) 14K Hair Earrings
Reg. \$75.00
NOW \$37.50

SAVE
WATCHES
30%-50% OFF
A) Seiko 30% OFF
B) Citizen 30% OFF
C) Pulsar 50% OFF
D) Concord 50% OFF
E) Raymond Weil 50% OFF
F) Special selection
Sports Watches \$19.99

SALE ENDS
STORE CLOSING
MARCH 31ST.

Corbo Jewelers

*Sale excluding Special Orders
and solid gold watches

BLOOMFIELD
STORE ONLY!
586 Bloomfield Avenue

H&R Block
stands behind
its work.

We guarantee your satisfaction. And our experience in preparing complete and accurate tax returns will give you peace of mind.

H&R BLOCK®

America's Tax Team. Put us to work for you!

125 WASHINGTON AVE., BELLEVILLE • 751-3836
155 FRANKLIN AVE., NUTLEY • 235-1000
299 GLENWOOD AVE., BLOOMFIELD • 743-0898

OPEN 9 AM - 9 PM Weekdays, 9 - 5 Sat. & Sun.
APPOINTMENTS AVAILABLE

Master Card, Visa, Discover & American Express Accepted
Speakers for your club or civic group available free of charge.
Call any office for information.

Belleville
Transmission
& Auto Repair

FREE
5 POINT
TRANSMISSION
CHECK!!!

- FLUID LEVEL
- FLUID CONDITION
- LEAKS
- ROAD TEST
- LINKAGE

TRANSMISSIONS

from \$475.00 incl. Parts
*Ford C4, GM 350 & Labor
FREE ESTIMATES!

190 WASHINGTON AVE.
BELLEVILLE • 759-5123

CORNER OF RUTGERS ST.
MAJOR CREDIT CARDS ACCEPTED

Marjorie Gebhardt, 79

Services for Mrs. Marjorie A. Gebhardt, 79, of Belleville were held March 2 in the Goble Funeral Home, Sparta.

Mrs. Gebhardt, who died Feb. 26 in her home had been a legal assistant for her husband, Charles, before her retirement 10 years ago. During the 1930's, she was employed with the National

Mortgage Corp. in Newark. Mrs. Gebhardt was a member of the West Essex Duplicate Bridge Group in West Orange.

Born in Newark, she lived in Millburn before moving to Belleville. Mrs. Gebhardt also maintained a summer residence in Sparta.

Also surviving are a sister, Mrs. Gladys Charles, and a brother, Warren Anschutz.

Elsie Hughes, 52

A Mass for Mrs. Elsie Hughes, 52, formerly of Belleville, was offered March 6 in Our Lady of Consolation Church, Wayne, following the funeral from the Vander May Colonial Home, Wayne.

Mrs. Hughes died March 2 in the University of Nebraska Medical Center, Omaha.

Mrs. Hughes was a volunteer for the Juvenile Diabetes Foundation, the American Liver Foundation

and the Chilton Memorial Hospital. She also belonged to the Glen Ridge Country Club.

Born in Montclair, she lived in Belleville before moving to Wayne 30 years ago. She also maintained a residence in Lavallette for many years.

She is survived by her husband, Robert L. Sr.; a daughter, Allison; two sons, Robert L. Jr. and Glenn A., and her mother, Mrs. Agnes Schneider.

Jerome Kaden, 59

Services for Jerome Martin Kaden, 59, formerly of Belleville were held Feb. 28 in the Menorah Chapels at Millburn, Union.

Mr. Kaden died Feb. 26 in Overlook Hospital, Summit.

He was vice president of sales with Kaz Inc., a wholesale manufacturing firm in New York City, where he worked for many years.

Mr. Kaden was a graduate of

Rutgers University in Newark with a bachelor of science degree in business. He served in the Army during the Korean Conflict.

Born in Newark, he lived in Belleville before moving to Murray Hill many years ago.

Surviving are his wife, Janice; a son, Roger; a daughter, Jennifer Anne, and a brother, Robert.

OBITUARIES

Florence Hahn, 85

A Mass for Mrs. Florence Hahn, 85, formerly of Belleville, was offered March 6 in St. Ann Church, Parsippany-Troy Hills, following the funeral from the Par-Troy Funeral Home, Parsippany-Troy Hills.

Mrs. Hahn died March 2 in the home of her daughter, Mrs. Joyce Coleman, in Parsippany-Troy Hills. She had been an inspector for Tiffany and Co. in Newark for many years, retiring 12 years ago.

Born in Belleville, Mrs. Hahn lived in the Newark and Belleville area for many years before moving to Parsippany-Troy Hills 12 years ago.

Also surviving are another daughter, Mrs. Dorothy DeCarlo; two sisters, Mrs. Grace Kelly and Mrs. Helen McEvoy, nine grandchildren and seven great-grandchildren.

James Celfo, 78

James Celfo, 78, of Belleville died Feb. 26 in his home.

A Mass was offered March 1 in St. Peter's Church, Belleville, following the funeral from the Kiernan Funeral Home, Belleville.

Mr. Celfo had been a pressman for 30 years with The Star-Ledger before retiring 15 years ago. He was a member of the Senior Citizens Club of Belleville.

Born in New York City, he lived in Newark before moving to Belleville 27 years ago.

Surviving are his wife, Fanny; a daughter, Mrs. Angelica Stefanelli; two sisters, Mrs. Masie Madonna and Mrs. Fannie Russomano; two brothers, Anthony and Joseph; five grandchildren and two great-grandchildren.

Elizabeth Anderson

Services for Elizabeth Anderson of Belleville were offered March 5 in Second Baptist Church of Belleville. Arrangements were by the Whigham Funeral Home, Newark.

Mrs. Anderson died Feb. 28. She is survived by two sons, Eugene Anderson Jr. and Robert

Anderson; four sisters and brothers, Lenora Reese, Majdara Hargette, John B. Sheppard and Lonnie Pittman; two grandchildren and two great-grandchildren.

Interment was in Glendale Cemetery, Bloomfield.

Michael Rossi Sr., 76

Services for Michael Rossi Sr., 76, formerly of Belleville, were arranged by the Roberts Funeral Home, Ocala, Fla.

Mr. Rossi died Feb. 22 in his home in Silver Springs, Fla. He worked for the Essex County Parks Commission before retiring in 1978.

Prior to that, he was a co-owner of the Rossi Tavern in Belleville. Born in Belleville, he moved to Florida in 1978.

Surviving are a son, Michael Jr.; a daughter, Mrs. Rosalie Gomillion; a sister, Mrs. Connie Rossi Rodino; a brother, Charles, and a grandchild.

Elsie A. Caples, 92

Mrs. Elsie A. Caples, 92, of Belleville died March 4 in the Clara Maass Medical Center, Belleville.

A Mass was offered today in the House of Prayer, Newark, after the funeral from the Johnese Nutley Home for Funerals, Nutley.

Mrs. Caples had been a computer operator for the Ronsori Corp. in Newark before retiring 20 years ago.

Born in Newark, she lived in Detroit, Irvington and Jackson before moving to Belleville five years ago.

Local woman wins bond

S. Thomas Aitken, Chairman of Peoples Bank, N.A. in Fairfield, announced today that Ms. Angela Schweitzer of Nutley was selected as the winner of a \$100 United States Savings Bond from a random drawing of individuals who recently completed a Peoples Bank survey.

The survey provided both customers of the bank and other area residents a chance to express their opinions on the most important credit and loan needs that exist in the communities served by the Peoples Bank.

"This year's survey was mailed to 500 residents of Essex County, according to Mr. Aitken. "It went to 250 customers and another 250 persons that do not presently bank with us," he continued. "We even printed the survey in English and Spanish so we could be sure everyone that received it had a chance to let us know their feelings," he added.

Refuse collection rules outlined

Knowing where and when to place trash is half the battle in keeping Belleville clean. Here, according to the Health Department, are the most common collection problems, and the regulations defining who is responsible for what in the township waste stream.

A. GARBAGE COLLECTOR is responsible for:

1. All Household Waste
2. Rugs cut in 4 ft. lengths tied in bundles not more than 40 lbs.
3. Furniture and Bedding.
4. Bulk Items: NOT more than one bundle per pick-up will be collected at curbside. The bundle must be securely tied, not weighing more than 40 lbs.

B. DEPARTMENT OF PUBLIC WORKS:

1. White Goods: Refrigerators, stoves, water heaters, washing machines and dryers may be placed at the curb for pick-up by the Department of Public Works. Call 450-3412 to arrange for pick-up.
2. Garden Debris, Brush and Grass Clippings: Must be placed in separate containers not weighing more than 40 lbs. per container. Brush must be tied in bundles not more than 4 ft. in length, not more than 40 lbs. per bundle. All of these items must be separated from household garbage, and must be placed on the curb, not in the street. The Department of Public Works will collect these items on your FIRST scheduled garbage collection day.
3. Discarded Tires: Tires may be brought to the Department of Public Works at 560 Cortlandt Street for disposal. No tires will be picked up at curbside. Resident identification is required.

C. HOMEOWNER:

Construction Debris: The removal and disposal of debris generated by home improvement projects is the sole responsibility of the property owner. All plumbing fixtures are classified as construction debris and will NOT be picked up if placed at the curb. Proper disposal is the responsibility of the homeowner.

What is the earned income credit?

You may qualify for an earned income credit if your adjusted gross income and earned income for 1990 were under \$20,264 and you provided a home in the United States for more than six months during the year where you and a qualified child lived (the entire year if your filing status is qualifying widow(er)).

The amount of credit to which you are entitled is treated as a payment of tax that will provide you with a larger refund or reduce the amount of tax you would otherwise owe, states Bert Block, District Manager of H & R Block, Clifton. Whenever you have questions on how the laws affect your taxes, feel free to contact your local Block office or call Bert at 365-0999.

Innie Cozzarelli Memorial Home

IN YOUR TIME OF NEED
"A Family Name You Can Trust"



Vincent Cozzarelli, Reg. Ph.

276 Washington Avenue
BELLEVILLE
759-1114

Professional Service Directory



THE NUTLEY SUN, BELLEVILLE TIMES, BLOOMFIELD LIFE

Podiatrists

Dr. Marykate Noonan Doyle
Surgeon Podiatrist
Foot and Ankle Specialist
272 Holmes Street
BELLEVILLE
Call for Appt.
(201) 450-4070
Medicare and NJBS Participating Physician

Dr. Nicholas Pellicoro
Surgeon Podiatrist
FOOT SPECIALIST
526 Franklin Avenue
Nutley
667-1066
Medicare Participating Physician

Chiropractors

Dr. Robert J. LaBruzza
CHIROPRACTOR
• Auto Related Injuries
• Work Related Injuries
• Occupational Stress
• Back, Neck, Arm and Leg Pain
• Sports Related Injuries
• Permanent Impairment and Disability Evaluations
3 Edgewood Road
Bloomfield 429-2225
(Two weeks before Bloomfield High School)

DR. RALPH J. DI MAIO
CHIROPRACTOR
Serving your community
for over 11 years
Most insurances provide coverage.
751-8805
625 Joralemon St., Belleville

Dentists

Dial "NO PAINO"
(667) 24661
Cosmetic & Restorative
Dentistry
Smile Today
J. D. Muglia D.D.S.
10 Franklin Ave.
Nutley, NJ
24 Hr. Emergency
Service

Dentists

Vincent J. Lipoma
D.M.D.
General Dentistry
30 HUCK ROAD
BLOOMFIELD, N.J.
338-1120
Evening and Saturday
Hours Available

Attorneys

Deborah C. Peck
ATTORNEY AT LAW
General Practice:
• Matrimonial • Bankruptcy
• Wills • Accidents
FREE CONSULTATION
CLIFTON EXECUTIVE PLAZA
1200 ROUTE 46 WEST
CLIFTON, N.J. 471-1184

Welcome To Our New Office

Fred Appelbaum, D.D.S.

Pediatric Dentistry For
Infants, Children and Adolescents

Saturday Hours Available

502 Franklin Ave., Nutley 667-5507

Pain Specialist

PAIN CLINIC
Specialist in Pain Management
Treating Pain Conditions
with New Method
Headache • Arthritis
Neck Pain • Sprains
Back Pain • Leg & Arm Pain
Shan Nagendra, MD
(Dr. Franklin Dotoli's office)
460 Franklin Ave. Nutley
For Appointment Call
667-8640

This Space
Is Available
For Your
Professional
Advertising

ADVERTISE!

Obstetrics / Gynecology

NUTLEY - KEARNY
OBSTETRICS - GYNECOLOGY
HOWARD GRODER, M.D.
JEFFREY ROSEN, M.D.
HIGH RISK PREGNANCY
INFERTILITY

Nutley Medical Plaza
181 Franklin Avenue
Nutley, N.J. 07110
667-2212
Arlington Medical Building
837 Kearny Avenue
Kearny, N.J. 07032
991-1519
"Serving The Community For 40 Years"

For more information call 667-2100

NOTE: Always ask the physician or pharmacist about drugs or herbs that should not be taken in tandem with prescription medicine.

T.E.A.M. to help students

By Dawn Rafferty

During the week of March 4th, 24 Belleville High School students will begin a 6-week program called T.E.A.M. (Teen Esteem and Merit), a school based student support group. BHS staff members: Deborah Meola, Patricia Guardino, Victor De Paw, Rosemarie Candilloro, Jerry Kennelly, and Phil Eposito have been trained in support group facilitation and are eager to begin the support groups in BHS.

The goals of the school based support group are to identify self-

defeating behaviors and attitudes and to provide encouragement, support and nurturing. Members will meet once a week for 6 weeks during the school day. "Support groups are a necessity in every school system," added Meola, Substance Abuse Coordinator and T.E.A.M. staff member. "Not only do we find ourselves trying to educate students but we have to realize their needs and try and help them cope with everyday situations outside school and support groups are one way of meeting these needs."

I.A. classes perform community service

By Paul Parmenter

Students in Mrs. Di Lea's commercial arts and photography classes, part of the Industrial Arts Program at Belleville High School, are presently involved in a special community activity involving the Belleville Fire Department.

The Belleville Fire Department, on Franklin Avenue, placed a large bin behind its headquarters in which aluminum cans can be placed. The money collected from recycling these cans will be used for charitable purposes.

In addition, two bins have been placed in BHS, one in the teachers

lounge and one in the cafeteria. The cans collected at BHS will be deposited at the Belleville Fire Department Headquarters.

A second project worked on by the Industrial Arts classes at BHS was a special pamphlet explaining the basic roles and services of the Belleville Fire Department. It was prepared by Mrs. Di Lea's Commercial Art Classes and Mr. Senesky's Graphic Art Classes.

The booklets can be obtained through the Belleville Fire Department Headquarters on Franklin Avenue.

Belleville High School News



Lisa DeBenedetto and Stephanie Dalton listen intently to Clair representative, Susan De Lucia.

Clair presents seminar

By Laraine Nesto

Susan De Lucia, a technician specialist for Clair presented an all day seminar on intense hair coloring to the senior cosmetology class Feb. 28. De Lucia is an educator for professional hairdressers and is presently coordinating platform work for the International Beauty show.

The seminar provided detailed information and the practical application of highly technical mat-

erial that included formulation, the level system, developers, decolorization, and corrective coloring.

De Lucia's presentation is offered to the business sector of professional cosmetologists and costs five to six hundred dollars for the same two to three day seminar.

BHS students who demonstrated a proficiency in hair coloring received a certificate of participation from Clair.

Canada charms skiers

By Denise Wujciak

It wasn't the French Alps, but close to it! The language was the same, the snow was perfect for the downhill enthusiasts, the nights were cold and the days were bright with sunshine. It was exciting, friendly, inviting, entertaining, challenging and a cultural experience for a group of BHS Ski Club members. It was Quebec, Canada.

During the February vacation, a group of Belleville High students spent the week skiing in Canada. After the twelve hour bus ride and a stop at customs to check identification and birth certificates, the students and chaperons arrived at the Loews Le Concord in Quebec. They stayed there for seven days and skied Stoneham and Mont St. Anne mountains, took a side trip to Valcartier, a snow park, toured Quebec City, shopped, danced and tested a variety of French and continental cuisine. The days began at 6:30 a.m. for breakfast, followed by an eight hour excursion to the magnificent ski slopes. After dinner, students were allowed to partake in the tourist activities offered

by the city. Activities included touring the old city, dancing, shopping, or relaxing until the midnight curfew.

Even though Quebec is a relatively close neighbor, students realized that Quebec, Canada differs greatly from Belleville, New Jersey. Upon arrival, everyone needed to exchange higher money from American to Canadian. This proved to be a nice perk since Americans make a profit with the 13% exchange rate. However speaking was not as easy as converting money. Since the language spoken in Quebec is French, most students had an interesting time trying to communicate with the locals. Luckily, most of the Canadians are bilingual. In addition to difficulties speaking, everything written in Quebec is written in French, including the McDonald's menu!

The week was filled with excitement, discovery, and challenge. In addition to making Canadian friends, our students met groups of students from Long Island, Rhode Island, and NJ.

EDITOR'S NOTE - "Belleville High School News" is a new section of our newspaper, which will run in each edition, space permitting. It features a weekly roundup of student activities and events, reported by the students themselves. All Belleville High reporters are members of the school's journalism class.



your FREE EASTER ham or turkey

ENTER AT ALL THESE PARTICIPATING STORES.

Enter each week ... winners will be drawn March 18th, 1991 and announced in this paper on March 21st, 1991. Good Luck!

Chocolate Factory

460 Joralemon St.
Belleville
751-2484

Rossmore Pharmacy

338 Washington Ave.
Belleville
759-1956

Arena's Hair Salon

99 Franklin St.
Belleville
759-9794

Frades

Deli & Meat Market
311-313 Union Ave.
Belleville
759-3509

Bullet Hole

338 Washington Ave.
Belleville
759-3968

NOT JUST NAILS

316 Greylock Pkwy.
BELLEVILLE
751-6887
NOT JUST NAILS II
563 Washington Ave.
BELLEVILLE
759-6885

Video Dynasty

388 Main Street
Belleville
759-5350

Centanni Italian-American Deli

82 Overlook Ave.
Belleville
751-3910

Belleville Pub

140 Washington Ave.
Belleville
751-9545

Nutley Pet Center

406 Main St.
Belleville
751-1221

RULES: The merchants listed on this page make winning your ham or turkey as easy as filling out a coupon. You may be a lucky winner of either a delicious canned ham or 12-14 lb. turkey. Winners will be drawn March 18, 1991 and announced in this paper on March 21, 1991. Simply clip out and fill in the coupon at right or pick-up a coupon at any or all of these participating merchants and drop in the red & white box displayed. It's that simple. No purchase necessary to win.

— CLIP OUT —

Name _____

Address _____

Phone _____

No Purchase Necessary.
Contest Ends March 18, 1991

AS ADVERTISED IN

The Nutley Sun • Belleville Times • Bloomfield Life
Orechio Publications, 800 Bloomfield Ave., Nutley, N.J. 07110

EVENTS IN THE AREA

Fairs, flea markets, rummage...

Two day sale, 9:30 a.m. to 2 p.m. March 8, 9, Wesley United Methodist Church, 225 Washington Ave., Belleville. Household items, things for children, clothes for entire family.

Flea market, crafts, baseball cards, 9 a.m. to 5 p.m. March 10, Belleville High School, 100 Passaic Ave. Indoors and outdoors. Band fundraiser. Over 100 vendors. For more information, call 997-9535.

Flea market, crafts, baseball cards, 9 a.m. to 5 p.m. March 17, Sacred Heart Social Center, 655 Valleybrook Ave., Lyndhurst. Over 100 dealers. For information, call 997-9535.

Fundraisers...

Bazaar, sponsored by AARP North Essex Chapter 57, 9:30 a.m. to 4 p.m. March 7, Bloomfield Civic Center, 84 Broad St. Homemade baked goods, new and almost new items, plants, books, jewelry, boutique, crafts. Coffee and cake on sale.

Dance to benefit nursery school at Christ Church, 8 p.m. to midnight March 8, Christ Church parish hall, Park and Bloomfield avenues, Bloomfield/Glen Ridge. \$20 includes professional DJ, dancing, food and beverages. Tickets at the door. For more information, call 482-5309.

Art exhibit and auction, 6:30 p.m. March 8, School 5, Greylock Parkway, Belleville. Preview followed by auction at 7:30 p.m. \$3. Refreshments and lithograph to each guest. For tickets, call Mary Ann at 759-8313.

Jewelry sale, sponsored by St. Mary's Hospital Guild, 10 a.m. to 5 p.m. March 8, St. Mary's Hospital, Passaic. Handmade jewelry around the world. Credit cards accepted.

Country westerns night, 8 p.m. March 9, Bloomfield Elks 788, 296 Public Avenue. Live music by Country Sunshiners \$6. Food and drinks available. For information, call Joe Ostroski at 429-1827 or 429-0343.

An Evening at the Hop, sponsored by N.J. Dystonia Medical Research Foundation, 6 p.m. March 10, The Hop, Willow St., Bloomfield. \$30 includes entertainment and food. Cash bar. For tickets and information, call 661-3978 or Joyce at 667-4957.

Annual spaghetti dinner, sponsored by Annets Auxiliary Post 30, 2 to 6 p.m. March 10, 184 Park Ave., Nutley. Adults, \$6; children, \$3. For information, call Mary at 751-4417.

Dinner and races at the Meadowlands, sponsored by St. Mary's Hospital Guild, March 14. Doors open at 6 p.m. \$27 per person includes entrance fee, program, access to clubhouse, dinner (stuffed breast of chicken), gratuities. Reservations by March 7. Call hospital gift shoppe at 470-3047.

Chinese auction, 7 p.m. March 15, St. John's Episcopal Church, 215 Lafayette Ave., Passaic. \$3. Refreshments.

Fish and chips dinner, sponsored by Louise Palagano & Friends, 6 to 7:30 p.m. March 15, Bloomfield Civic Center, 84 Broad St. \$8.50. Takeout orders on request. Partial proceeds to Bloomfield Police Department vest fund. For more information, call Celeste Roppolo at 748-0297.

Breakfast, sponsored by Nutley Elks 1290, 9 a.m. to 1 p.m. March 17, 242 Chestnut St. Pancakes or eggs with bacon. \$5 per person; \$4 senior citizens; \$3 children under 12.

Up and Away Treasure Tray, sponsored by Belleville School 8, 7 p.m. March 22, Branch Brook Manor, Belleville. Advance tickets only. \$20 includes 25 tickets, full dinner and dessert. For tickets, call Karen McKinley at 751-5311 or Julie Murnock at 450-8971.

3rd annual Bunny Festival, sponsored by Woman's Service Corp. of Bloomfield, 2 to 4 p.m. March 23, Denarest School, 465 Broughton Ave. \$4 includes refreshments, awards, face painting, bunny ears. Chinese auction and pictures with Easter bunny available. Entertainment by Tales a la Puppetry. For tickets, call 893-9057.

10th annual dinner fashion show, sponsored by Spring Garden School PTA, 6:30 p.m. April 4, Fiesta, Woodridge. Fashions and beauty ideas

from Panco Salon of Ridgewood. For tickets or more information, call Teri Tedesco at 661-3735 or Donna Cocco at 284-1282, 523.

Entertainment 1991 coupon books, Grace Church, Nutley. Call 235-1177; **American Cancer Society.** Call 736-7770; **Men's Club, Congregation Ahavath Achim.** Call 759-9394. **St. Mary's Home and School Association, Nutley.** Call Debbie Mowad at 667-5081 or St. Mary's School at 667-0801.

Other events...

Free health screenings, at Montclair Community Hospital, 120 Harrison Ave., Montclair. Appointments required. Call 744-7300, ext. 4296, 10 a.m. to 1 p.m. daily. **March 16 eye problems, Dr. Pruzon.** Corporate Outreach Team offers free health screenings for employees at your place of business. To arrange for an on-site screening, call Marie Oropolo at 746-4644.

Map reading, refresher seminar, 7:30 to 9:30 p.m. March 11, Nutley Adult School, Nutley High School, 300 Franklin Ave. \$6. For information, call 667-2525.

CPR and first aid classes, Nutley Chapter, American Red Cross, 169 Chestnut St. C.P.R. and Standard First Aid, 7 to 10 p.m. March 7, 14, 21, 28, 55; C.P.R. Recertification, 7 to 10 p.m. March 25, \$15. Pre-registration required. Call Annmarie at 667-3818 9 a.m. to noon, 1 to 4 p.m.

Birthing clothing drive, sponsored by Women's Club of Nutley. Needed: new or used maternity clothes, newborn items such as sweaters sets, receiving blankets, sleepers, booties, etc. Birthright aids pregnant women in need of medical aid, shelter, legal aid, counseling, emotional support. For pick up, call 661-9029.

Nutley Museum open 2 to 4 p.m. third Sundays, 65 Church St. For more information, call 667-5239.

Tuesday Toddlers now forming in Bloomfield, Belleville, Nutley area for children 21 months to three years. Thirty-something parents of two year old organizing an informal, afternoon at-home play group. No fee. Host parents for the week provide snacks. For more information, call Tom and Maria Natale at 429-7613 after 2:30 p.m.

Patient transporter volunteers needed at Montclair Community Hospital, 1230 to 2:30 p.m. Monday, Wednesday, Friday. Taking stretcher or wheelchair patients to CAT scan unit. For more information or to volunteer, call 744-7300, ext. 4279.

For singles only...

Social dancing, 7 to 11 p.m. every Friday, Nutley Italian-American Club, 642 Franklin Ave. For more information, call 284-0639 after 5 p.m.

Bethany O.N.E.S., for singles, widowed, divorced of all religions, 12:30 p.m. third Sunday, Bethany Presbyterian Church, corner High Street and W. Passaic Avenue, Bloomfield. \$5 or food item of equal value for buffet dinner. **March 17: St. Patrick's Day.** Songs of Ireland film from Bloomfield Public Library. For more information, call 338-7692.

Young Adult Singles, first and third Tuesdays, Holy Family School, Brookline Ave., Nutley. 21 to 43. For information, call 751-2415 or 759-9194.

Essex County Chapter of Widows and Widowers, 8 p.m. second Tuesdays, Reflections Hall, Hillside. All ages. For more information and directions, call 751-3015.

New Jersey Moonrakers, for tall adults, 8 p.m. second Tuesdays, Meadowlands Hilton, 2 Harmon Plaza, Secaucus. Dancing and socializing following meeting. \$3. For more information, call 822-0362.

Meetings...

AARP Belleville Chapter 2051, 1 p.m. March 7, Fewsmith Memorial Presbyterian Church, 444 Union Ave. Musical entertainment by Living Tones. Guests welcome.

Nutley branch, AAUW, 8 p.m. March 7, Nutley Historical Society, 65 Church St. Ruth Linz will describe her adolescent years in Nazi Germany.

Hoffmann-La Roche Retirees, 1:30 p.m. March 9, Roche complex. Four man quartet will entertain. Three buses available for Medieval Times dinner and show.

New Jersey State Opera Guild, 8 p.m. March 12, Nutley Savings Bank community room. Entertainment by Vivienne Bono and Jane Malizia. Plans for May 19 concert to be discussed. Refreshments. For more information, call John Forte at 667-0253.

Nutley Chapter AARP, 1 p.m. March 14, Parks and Recreation building, 44 Park Ave. Entertainment by Harmonica Band of Union. To join, bring National AARP card and \$2 dues.

Catholic Daughters of the Americas, Court Santa Maria, 8 p.m. second Tuesdays, Knights of Columbus Hall, 98 Bridge St., Belleville. Newcomers invited.

Ladies auxiliary, Stuart E. Edgar Post 493, VFW, Post Home, 271 Washington Ave., Nutley. Meeting changed to Wednesday, March 13. Membership open.

Belleville Historical Society, 7:30 p.m. first Tuesday, Belleville Reformed Church, 171 Main St. Membership open.

Kingsland Trust, 8 p.m. second Wednesday, Kingsland Manor, 3 Kingsland St., Nutley.

Tri-County Camera Club, 8 p.m. Nutley Museum, 65 Church St. Open to the public unless otherwise indicated. **March 12:** nature slide competition and Comedy in Nature competition; **March 19:** program, 1990 Westchester Nature Salon.

Court Gratia 751, Catholic Daughters of the Americas, 8 p.m. Nutley Annex Post 30, 184 Park Ave., Nutley. Social March 18. For information, call Erma Mastro at 667-4430.

Deborah League of Bloomfield, 8 p.m. second Tuesdays, Civic Center, 84 Broad St., first floor. Refreshments. Everyone welcome.

American Legion auxiliary Nutley unit 70, 8 p.m. second Monday, 45 Franklin Ave.

Essex County American Legion auxiliary, 8 p.m. second Thursday, 45 Franklin Ave., Nutley.

Essex Salon No. 8, Eight and Forty, 8 p.m. third Monday, 45 Franklin Ave., Nutley.

Ladies auxiliary, Younginger-Alden Jr. VFW Post 275, 7:30 p.m. second Wednesday, 17 Belleville Ave., Belleville. Membership open.

Nutley Junior Woman's Club, 8 p.m. first Monday, clubhouse, 216 Chestnut St. Open to women 18 to 35. For more information, call membership chairman Denise Pender at 235-1822.

Evening Membership Dept. of the Nutley Woman's Club, 8 p.m. second and fourth Thursdays, clubhouse, 216 Chestnut St. Women of all ages invited.

Belleville Kiwanis Club, 6:30 p.m. Thursday, San Carlo Restaurant, Lyndhurst.

Essex Chapter, American Association of Medical Assistants, second Wednesdays, Doctors' Lecture Hall, Clara Maass Medical Center, 1 Franklin Ave., Belleville. For information, call 743-7686.

Ladies auxiliary, Post 711, VFW, 8 p.m. second Thursday, 369 Broughton Ave., Bloomfield. For membership information, call Helen Mooney at 338-8053.

VFW Post 711, 8 p.m. second and fourth Mondays, 369 Broughton Ave., Bloomfield. For membership information, call 338-4256 or 338-8404.

Belleville Lions Club, 12:15 p.m. second and fourth Thursdays, Forest Hill Field Club, Bloomfield. Call Dennis Mautone at 751-4100.

Junior Woman's Club of Belleville, 7:30 p.m. second Monday, 51 Rossmore Place. For women 18 to 35. For more information, call Terry at 759-8669.

Juniorettes Club of Belleville, 6 p.m. second Monday, 51 Rossmore Place. For girls 12 to 18. Members wanted. Call Terry at 450-4835.

Junior Woman's Club of Bloomfield, 8 p.m. second and fourth Tuesdays, September through June, Civic Center, 84 Broad St. Open to women 18 to 35. For more information, call Laura Curcio at 338-0614.

Bloomfield Kiwanis Club, 12:15 p.m. Thursday, Forest Hill Field Club, Belleville Ave., Bloomfield.

Nutley Speakers Club, 7:45 p.m. Thursdays, 6 Willow Place. New members welcome. For information, call 667-5473.

White Eagle Unit 448, American Legion Auxiliary, 8 p.m. fourth Tuesday, Essex Manor, 41 Broughton Ave., Bloomfield.

Belleville Old Guard, 9:30 a.m. second and fourth Tuesdays, Fewsmith Memorial Presbyterian Church, 444 Union Ave. Refreshments.

Woman's Club of Belleville, 7:30 p.m. third Monday Sept. to June, 51 Rossmore Place. Next meeting: Feb. 18.

Support groups...

Job Seekers of Belleville, a skill development and support group for unemployed, underemployed, first time entries into job market, 7:30 to 9:30 p.m. Wednesdays, Fewsmith Church, Union and Little streets. No fee. Refreshments. Call Dave at 450-1858 or the church 9:30 a.m. to noon at 759-6869. **March 6:** resume writing workshop 7 to 9 p.m. Open to the public.

Catastrophic illness support group, 6 to 7:30 p.m. first and third Tuesdays, The Hospice, 34 Label St., Montclair. Separate sessions for families and patients. For more information, call 783-7879.

New Jersey Chapter of NAAFA (National Association to Advance Fat Acceptance), social events, human rights information, monthly newsletter. For more information, write P.O. Box 110203, Nutley, 07110 or call 667-2957.

Overeaters Anonymous, self-help group for compulsive overeaters or people with eating disorders, 8 p.m. Tuesdays, Bethany Lutheran Church, New and Joralemon streets, Belleville. For more information, call 759-0770. **8 p.m. Wednesdays, Christ Church, Park and Bloomfield avenues (opposite Grand Union), Bloomfield.** For more information, call 746-4658.

Charles F. Rilli, M.D.
announces the opening of his practice of
UROLOGY
at 256 Broad Street, Bloomfield, N.J. 07003
Medicare Assignment Participant — Insurance Accepted
Practice includes:
Prostate Cancer and Disease • Impotence • Infertility
Vasectomy • Urine and Bladder Control Problems
Kidney Stone Disintegration
Bladder and Kidney Infections and Disorders
EVENING AND SATURDAY APPOINTMENTS AVAILABLE
Bloomfield
Harrison
213 S. Frank Rodgers Blvd.
(201) 743-4450 (201) 482-7070

Watch College Basketball on OBC-TV-36



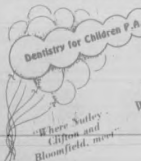
Watch college basketball on OBC-TV 36!

| Thursday, Mar. 7 | Friday, Mar. 6 | Saturday, Mar. 9 | Monday, Mar. 11 | Tuesday, Mar. 12 | Wednesday, Mar. 13 |
|--|---|---|---|--|--|
| 6:00 pm OBC Classic Cartoons | 6:00 pm OBC News Magazine | 6:00 pm OBC News Magazine | 6:00 pm OBC News Magazine | 6:00 pm OBC Classic Cartoons | 6:00 pm OBC News Magazine |
| 6:30 pm Mads Room For Diddy | 6:30 pm Rebroadcast of OBC News Magazine | 6:30 pm Rebroadcast of OBC News Magazine | 6:30 pm Rebroadcast of OBC News Magazine | 6:30 pm OBC Classic Movie: A Star is Born | 6:30 pm Rebroadcast of OBC News Magazine |
| 7:00 pm Four Star Playhouse | 7:00 pm Christian Faith Center w. Pastor John Espalito | 7:00 pm Four Star Playhouse | 7:00 pm Four Star Playhouse | 7:00 pm To be announced | 7:00 pm Christian Faith Center with Pastor Espalito |
| 7:30 pm Inside Crime | 7:30 pm The Ed Wynn Show | 7:30 pm OBC Classic Cartoons | 7:30 pm OBC Classic Cartoons | 7:30 pm The Music Machine | 7:30 pm Cappy's Casino Corner |
| 8:00 pm OBC Classic Movie (Albetti & Costello) "Jack and the Beanstalk" | 8:00 pm Hawaii, The Beauty | 8:00 pm To be announced | 8:00 pm To be announced | 8:00 pm Power Play Music Videos | 8:00 pm Inside Crime |
| 8:30 pm The Music Machine | 8:30 pm Furture Intiques | 8:30 pm The Music Machine | 8:30 pm The Music Machine | 8:30 pm To be announced | 8:30 pm The Music Machine |
| 10:00 pm Power Play Music Videos | 8:30 pm To Be Announced | 9:30 pm Power Play Music Videos | 9:30 pm Power Play Music Videos | 11:00 pm Rascals Comedy Hour | 11:00 pm Power Play Music Videos |
| 11:30 pm Rascals Comedy Hour | 10:00 pm The Music Machine | 10:00 pm Power Play Music Videos | 10:00 pm Power Play Music Videos | 11:00 pm New York Comedy Shop | 11:00 pm New York Comedy Shop |

ALL NEW! OBC News Magazine
Monday, Wednesday and Friday
See Your Community on TV! 8 p.m.

After 23 Years...
DENTISTRY FOR CHILDREN, P.A.
Is Proud To Announce The
RELOCATION
Of Their Office To:

**382 W. PASSAIC AVE.
BLOOMFIELD, NEW JERSEY**
(Diagonally across from our old office and adjacent to Broadway Photo)



By Appointment
201-338-1383

Jack Budnick, D.D.S.
Philip Wasserman, D.D.S.
William B. Kuen, D.M.D., M.Sc.D.
Orthodontist

382 West Passaic Ave.
Bloomfield, N.J. 07003

Events at School 10



Robyn Perrine — Mitchell Malnati

Robin Perrine to wed Mitchell D. Malnati

Mr. and Mrs. Nicholas Perrine of Belleville announce the engagement of their daughter, Robyn A., to Mitchell D. Malnati, son of Mr. and Mrs. Peter Malnati of Kearny.

The wedding is planned for June 20, 1992.

Miss Perrine, an alumna of Bel-

leville High School, is a sales representative with Eastern Tri-Pack Inc., Carlstadt.

Mr. Malnati, a graduate of Kearny High School and DeVry Institute of Technology, is a service support engineer with Stratus Computer Inc., New York, N.Y.

Pre-Menstrual Syndrome workshop set at Clara Maass

Clara Maass Medical Center's Community Services Department is sponsoring a workshop for women suffering from Pre-Menstrual Syndrome (PMS) 9 a.m. to noon March 26.

The workshop is suggested for women who experience PMS symptoms such as extreme fatigue, mood changes, fluid retention, forgetfulness, etc. Instructors will define PMS, discuss possible causes and suggest solutions for dealing positively with PMS. Workshop

participants will use a symptom chart to determine the presence and severity of the illness. A slide show and discussion of drug therapy, diet and exercise is also included.

Pre-registration and pre-payment of \$15 is required by March 20. The fee includes educational materials and light refreshments. To register or for more information, call Monique Davis, health educator, at 450-2213.

STORK CLUB

Alyssa Kay Verian

A first child, a daughter, Alyssa Kay, was born to Chipper and Karen Verian Feb. 26 at Clara Maass Medical Center, Belleville. Birth weight was 7 pounds, 10 ounces.

Mrs. Verian is the former Karen Stampe, daughter of Mr. and Mrs. Karl Stampe of Belleville. Mr. Verian, son of Patrician Verian of Belleville, is a firefighter with the Township of Belleville.

Nicholas Stephen Costa

A third child, a son, Nicholas Stephen, was born to Dr. and Mrs. Peter Costa of Valley Cottage, N.Y. Feb. 22 at Hackensack Hospital. Birth weight was 7 pounds, 1 ounce. He joins Peter, three and a half and Vinny, two.

Mrs. Costa is the former Angela Palidino, daughter of Mr. and Mrs. Vincent Palidino of Lodi. Dr. Costa, son of Mr. and Mrs. Peter Costa of Nutley, is a podiatrist in Haverstraw, N.Y. Great grandmother is Mildred Badame and great grandfather is Peter Costa.

Peter Lee Schenke

A second child, a son, Peter Lee, was born to Mr. and Mrs. Andy Schenke of Middlesex Jan. 25 at Clara Maass Medical Center, Belleville. Birth weight was 7 pounds, 12 ounces. He joins Timothy, 14 months.

Mrs. Schenke is the former Lisa Parrillo, daughter of Mr. and Mrs. Frank Parrillo of Belleville. She is a systems manager at AT&T, Piscataway. Mr. Schenke, son of Mr. and Mrs. John Schenke of Belleville, is a systems designer at AT&T, Somerset.

Alexis Joan Kreie

A first child, a daughter, Alexis Joan, was born to Mr. and Mrs. Richard Kreie of West Milford Feb. 22 at Clara Maass Medical Center, Belleville. Birth weight was 6 pounds, 9 ounces.

Mrs. Kreie is the former Roslyn Dragotto, daughter of Mr. and Mrs. Peter Dragotto of Belleville. She is a cable repair representative with United Artists Columbia Cablevision. Mr. Kreie, son of Richard J. Kreie of Bloomfield, is a quality control inspector with Teledyne Powder Alloys.

Alexander John Ramsey

A first child, a son, Alexander John, was born to Mr. and Mrs. Robert Ramsey of Hatfield, Pa., Feb. 16 at Chestnut Hill Hospital, Philadelphia, Pa. Birth weight was 8 pounds, 8 ounces.

Mrs. Ramsey is the former Lynda DiGregorio, daughter of Mr. and Mrs. Silvio DiGregorio of Nutley. Mr. Ramsey is the son of Catherine Ramsey of Jeffersonville, Pa. and the late John Ramsey.

Lyme disease March 20

With the number of cases of Lyme disease on the rise in New Jersey, many people are interested in learning how to protect themselves from this tick-borne disease.

Clara Maass Community Services will sponsor an educational program on Lyme disease 7 to 8:30 p.m. March 20. It will feature Dr. Donald Marks, an internist currently engaged in full-time medical research on treatments for Lyme disease. He will discuss the cause of the disease, currently available treatments and methods of prevention.

The seminar is recommended for people who live, work or spend their leisure time in heavily wooded areas. Lyme disease is carried by a tick that is found in such wooded areas and is often characterized by a rash with a red circle around the puncture site, mild headaches and fatigue. Undiagnosed and untreated, it can lead to more severe neurological symptoms.

Pre-registration and pre-payment of a \$5 fee is required by March 13. Call Monique Davis, Clara Maass health educator, at 450-2213.



A SAFE RIDE HOME — Marshall Redford Paulson of Bloomfield was the first baby born at Clara Maass Medical Center on Valentine's Day and that distinction earned his parents an infant car seat. The giveaway was part of weeklong activities held at the medical center during National Child Passenger Safety Awareness Week. Donna Makris, R.N., parent education coordinator holds the car seat as Marshall's parents, Mark and Sondra, look on.

ADVERTISE!

NAILS

by Jodie

21 Franklin Ave.
Nutley 667-9006

Specials

WITH PAULA

Friday & Saturday
Acrylic Fillings
\$25.00
reg. \$35.

WITH CHERYL

Wednesday & Thursday
Tips & Wraps
\$35.00
reg. \$65.

MANICURE
& PEDICURE

with Paula or Cheryl \$25.00
reg. \$35

Specials Expire 3/30/91

NEW JERSEY UROLOGY ASSOCIATES P.A.

LOUIS J. DI BELLA JR., M.D. — IRA D. TANZER, M.D.

DIPLOMATES AMERICAN BOARD OF UROLOGY

We are participating physicians in the Medicare Program and accept assignment for all office visits, consultations, and surgery.

OUR PRACTICE ENCOMPASSES THE FOLLOWING:

- ★ Kidney, Bladder, and Prostate Surgery
- ★ All Urologic Cancers
- ★ Stone Disease—Both Medical and Surgical Treatment (Including Shock Wave Lithotripsy at the Stone Center of New Jersey in Newark)
- ★ Infertility
- ★ Treatment of Impotence (With Insertion of Penile Prosthesis)
- ★ Treatment of Urinary Tract Infection
- ★ Cystoscopy and Vasectomy
- ★ Prostatic Ultrasound

OFFICE LOCATIONS:

180 FRANKLIN AVENUE
NUTLEY, NEW JERSEY
667-5666

17 SYLVAN STREET
RUTHERFORD, NEW JERSEY
460-7410

PEOPLE FOR ANIMALS

Low Cost Spay/Neuter Clinic

433 Hillside Avenue, Hillside

Over 100,000 cats and dogs are destroyed in New Jersey annually because they are unwanted.

Cut & Save

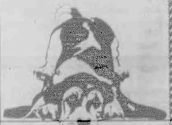
PREGNANT AND IN-HEAT
ANIMALS CAN BE SPAYED

FOR APPOINTMENT
PLEASE CALL

964-6887
CLOSED MONDAY

Male Cats \$25
Female Cats \$35
Female Dogs \$35-\$50
Male Dogs \$25-\$35

Prices include all
inoculations and
examinations



Think For The Future

Four Ways You'll Save at Grand Union!

1. Everyday Low Prices!
2. Red Dot Specials!
3. Unadvertised Red Dot Specials!
4. Super Coupons!

354 MAIN AND JORALEMON AVE., BELLEVILLE • OPEN 24 HOURS • STORE DIAL 759-1750

U.S.D.A. Choice - Boneless Ultra Trim Beef

**Top Round
or Rump Roast**

Also:
Sirloin
Tip

289.
Lb.

U.S.D.A. Grade 'A' Fresh - Split with Ribs

**Perdue
Chicken Breasts**

189.
Lb.

Super **GRAND UNION** Coupon

(6/17)

1-Ply - Biodegradeable
**Grand Union
Paper Towels**

One
100 Sheet
Roll

39¢

No Minimum Purchase Required With This Coupon. Good
Mar. 3 Thru Mar. 9. Limit One Coupon Per Family.

U.S. No. 1

**All Purpose
White Potatoes**

10-Lb.
Bag

149.

Significant Source of Vitamin A

**Fresh
Broccoli**

Large
14 Size

Bunch

129.

Super **GRAND UNION** Coupon

(6/15)

Quarters

**Blue Bonnet
Margarine**

One
1-Lb. Pkg.

39¢

No Minimum Purchase Required With This Coupon. Good
Mar. 3 Thru Mar. 9. Limit One Coupon Per Family.

Deli Sliced To Order

**Russer's Meat
or Beef Bologna**

Half
Lb.

169.

Mixed Vegetables, Peas & Carrots or Cut

**Grand Union
Peas or Corn**

20-oz.
Bag

99¢

Super **GRAND UNION** Coupon

(6/16)

Tab, Fresca or Regular or Diet Sprite,
Cherry Coke, Minute Maid Orange or Regular
or Caffeine Free Coca-Cola or

**Coke Classic
or Diet Coke**

One
2-Liter Btl.

99¢

No Minimum Purchase Required With This Coupon. Good
Mar. 3 Thru Mar. 9. Limit One Coupon Per Family.

Assorted Flavors -
Fat Free Frozen Dessert or

**Sealtest
Ice Cream**

Half
Gal.
Cont.

199.

U.S.D.A. Grade 'A' Fresh

**Cookin' Good
Roasting Chickens**

5 to
7 Lbs.

Lb.

69¢

**1/2
PRICE**

Round - Frozen

**Italian Village
Cheese Ravioli**

13-oz.
Pkg.

99¢

Frozen Concentrate

**Grand Union
Orange Juice**

12-oz.
Can

99¢

Pure

**Bertolli
Olive Oil**

8.5-oz.
Btl.

199.

Meat

**Plymouth Rock
Hot Dogs**

1-Lb.
Pkg.

99¢

GRAND UNION

Not Responsible For Typographical Errors. We Reserve The Right To Limit Quantities. For Consumer Information or Assistance, Call Toll Free, 1-800-221-1835.

Prices and Offers Effective Sunday, Mar. 3 thru Saturday, Mar. 9, 1991.

Belleville Times SPORTS

BUC SHOTS

By Mike Lamberti



March Madness is upon us and the next four weeks should be quite interesting for all the basketball fans throughout the country. College hoops have begun conference tournaments, and the NCAA bids will be extended this Sunday evening at 6 p.m.

In this area, high school hoops are winding down, with the state championships set for this weekend. Starting next week, the third annual Tournament of Champions will commence, with the winners vying for the number one spot in the state by next weekend. Needless to say, there should be plenty of interesting contests in New Jersey High School basketball over the next ten days.

For example, Belleville High School will be the site for two girls state semi final games in Group II and Group IV this evening. In the Group IV bracket, the winner of Section II faces the Section I winner. The favorites for that matchup were Linden and number one ranked Paterson Kennedy. The winner of that game will face the winner of the Central Jersey Group IV-South Jersey Group IV winner for the Group IV title on Saturday.

Now that the Tournament of Champions is played in New Jersey, winning the Group title doesn't constitute the end of the season. All the group winners get together the following week in a single elimination tournament, with the winner of that tournament being named the state best.

The TOC began in 1989 and featured a girls final of Union Catholic and Hoffman and a boys final between St. Anthony of Jersey City and Elizabeth. As most fans know, that '89 St. Anthony squad was awesome. It went undefeated and not only was ranked number one in New Jersey, it was also named the best team in the nation.

Some of the players on that squad, such as Bobby Hurley, Jerry Walker and Terry Dehere are starring on the collegiate level. Hurley is the point guard at Duke while Dehere and Walker are key players on Seton Hall's NCAA bound team. Hurley's younger brother, Danny has already committed to Seton Hall next fall. Danny Hurley is currently the point guard of a once again very talented St. Anthony squad.

Elizabeth came back to win the TOC in 1990, beating St. Anthony by three points. The Minutemen were led by 7'2" center Luther Wright, who is now at Seton Hall but is not playing this season due to Proposition 48.

Hoffman won the girls' TOC in '89 and Kennedy was victorious in '90. It's hard to believe that a team will beat Kennedy in the state this year, but anything is possible. Kennedy could have a difficult time just getting out of its section this season. The Lady Knights took on a very good Ridgewood squad last Tuesday for the championship of Group IV, Section I.

High school hoops in New Jersey have always been exciting and 1991 should be no different. If you have the time, try and attend a few of the games over the next two weekends. And, don't forget that there will be a state semi final girls game tonight at Belleville High School.

ON THE COLLEGIATE RANKS, the theme of the tournament is going to be "who will stop UNLV?" Chances are, there might not be any team that can stop the Runnin' Rebels. On paper, the Rebels should be the first team since UCLA in 1973 to win back to back titles.

However, stranger things have happened over the years in the NCAA tournament. In 1974, no one was supposed to beat UCLA, but North Carolina State pulled the trick in the national semis in double overtime. DePaul was supposed to be the cream of the crop in 1980 and '81, but in both instances they were beaten in the first round.

This isn't to say that UNLV will fall in the first round, but the Rebels aren't invincible. You know the old saying that on any given day a team can lose. It can happen, and there are a few teams in the country that have the talent to do it. Why do you think it's been 18 years since a team has won back to back crowns?

UNLV is a superb team. However, they play in a relatively weak conference and breeze through most of its games. On the few occasions that the Rebels play a team of high caliber, they have the ability to rise to the occasion. Such was the case in the Arkansas game back on February 10.

However, do you think the Rebels would be undefeated heading into the tourney if they played in a conference comparable to the Big 10, Big East or ACC? I think not. Because of the tremendous talent level of the teams that comprise those conferences, the battles are fierce night in and night out. I really believe that UNLV might have lost a few games if they had to play Syracuse twice, or Duke twice, or North Carolina, or Ohio State or Indiana twice in a season.

It's a much more difficult assignment to get up for every game as opposed to getting up for, let's say, five tough games a season. UNLV is the number one ranked team in the nation, and deservedly so. They won the title last year and will be very difficult to beat this time. However, don't write off the NCAA tournament as the Runnin' Rebel romp. It could be quite interesting.

HEY SETON HALL FANS. You guys have a legitimate contender in the NCAA's this year. The only thing that could hurt the Pirates is the youth factor. Seton Hall has only two seniors on the team and if senior center Anthony Avent gets into foul trouble, there could be serious problems. But, if Avent stays healthy and out of foul problems, this could be a very pesky group of Pirates. PREDICTIONS for the top seeds in the regions are relatively easy. UNLV will be the top seed in the west, Arkansas should get the number one spot in the southwest, Ohio State will be number one in the midwest and the number one seed in the east won't really be determined until the end of next weekend's games.

Indiana, Arizona, Duke, North Carolina and Syracuse all have a shot. Arizona might have been eliminated because it lost to Oregon last weekend. Duke took a giant step after beating North Carolina last Sunday in one of the best college games of the season. Say what you want about Duke losing in the big game. The fact is the Blue Devils continually get to that big game. Over the five year span of 1986-'90, Duke has been to four Final Fours and one championship game. This year, Duke's starting five is made up of underclassmen, including three players that are freshman or sophomores. This team is a legitimate Final Four contender once again.

Syracuse has a real good chance, based on its outstanding

(continued on page 12)

Nardone also takes home gold

Hywel, Hands among winners

By Joe Plegaro

With all aspects of the team season behind them, the Buccaners wrestling squad has begun to distinguish themselves in the individual portion of the year. Seven grapplers earned the right to compete at Jadwin Gymnasium in Princeton by placing in the top 3 in the Region 2 championships held last week at Kearny High School.

Belleville had three individual champs, one second place finisher and three third place entrants in one of the most successful regions in team history.

Junior Nardone (125) and Lee Hands (145) won for the first time in their respective careers. Dan Hywel (160) won his third consecutive Region 2 crown to become the only Buc wrestler to perform such a deed.

Soph Joshua Cardinale finished second at 103 pounds while Mike Conte (112), Mike Miele (130) and Carlo Ritacco (135) all earned bronze medals and an invitation to compete for a state championship.

Tom Pontrella (119) and Winnie DeSimone (140) both qualified for the Region 2 tournament, but were eliminated in the preliminaries and the quarterfinals, respectively.

For Nardone it was the third year in a row he reached the finals in Region 2 and his first victory after two second place finishes. In 1989, Junior lost to tournament MVP

Rich Bustamante of St. Benedict's. In 1990, Nardone lost to Fort Lee's Nelson Cruz who also won the tournament's MVP award. This year, Junior was not to be denied.

A pin in only one minute eliminated Clifton's Carl Schultz. That was followed by a 13-3 drubbing of Caldwell's Bob Fiore. Raul Guzman of Paterson East Side was the opponent in the finals and he fell by a score of 18-10. With an 11-10 record, Nardone has drawn the No. 2 seed in the state tournament and has a better than fair chance to win a state title this year.

For Lee Hands, it was the second year he qualified for the regions and he took full advantage of the lessons he learned from last year's early departure.

Lee dominated the regions much the same as he dominated the district. A 13-0 quarterfinal round victory over Clifton's Richard Tate was followed by an 11-1 decision over Orange's Kajie McDougald. The final round was sweet revenge for Hands as he bounced Passaic Valley's Brad Chomko by the score of 10-2. Chomko had beaten Hands in the finals of this year's Bloomfield Holiday Tournament, 14-7. Now at 26-2 for the year, Lee is on a roll and at the top of his form. He should do well in two weeks when he travels to Princeton with his six

(continued on page 12)

'91-'92 could be big year for Buc hoops

By Mike Lamberti

They could be on the verge of something very special. Then again, they could be on the verge of underachieving. What happens over the next eight months will pretty much settle the issue for the Belleville boys' basketball team.

Head coach Don Roll, having finished his fifth season as Buc's coach, sees a great deal of promise for the 1991-92 campaign. The '90-'91 Bucs put together a 9-14 record and, if it had better luck in one point games (they lost four of them), might have finished at .500 or better. You could compare this years team to the '86-'87 team, which finished 9-15 and then came back the following year to post a 15-10 record and the first winning campaign at Belleville in 13 years.

The '86-'87 team had a number of talented underclassmen who were on the verge of breaking through. That team also lost a number of close games. The players on that team learned from '86-'87 and cleared the important obstacle of learning how to win the following winter.

"Our top three scorers this year were underclassmen," Roll said.

"That's a big plus for us. They were very consistent offensively. We'll have some holes to fill because we're losing some valuable seniors, but the foundation is there."

The Bucs will lose three seniors to graduation this spring. Jim DuHaine, the 6'3" center/forward, turned in a consistent campaign.

"Jimmy gave us excellent work on the boards. He made it easier for Troy (Talmdage) and Dennis (DeWork) to score their points inside. Jimmy also gave us good offensive production. He'll be tough to replace next season. It will be up to some of our returning players to step forward and fill that role."

DuHaine averaged 9 points a game and turned in his best offensive performance in the season finale against Morris Hills, scoring 19 points.

Senior point guard Art Caruso had to fight a knee injury incurred in the football season finale against Nutley. Caruso had cartilage and ligament damage in the knee, but

(continued on page 13)

Spring sports season to kick off tomorrow

By Mike Lamberti

The spring sports season will commence tomorrow, with six varsity sports ready for the workouts at Belleville High.

On the diamonds, the Belleville baseball team is looking to rebound for a tough season in 1990. Fourth year varsity coach Nick Grande has a number of players returning from last season and if the pitching comes around, the Bucs should be quite competitive in the NNJL race.

On the softball diamond, coach Carl Corino will start the year without his all world pitching staff of Stacey Johansen and Treicia Donnelly. Both girls were graduated last spring after stellar careers.

Corino has put together 11 tremendous seasons as Belleville softball coach, winning over 220 games in that span. The Lady Bucs should once again be strong in '91, with a young, aggressive team ready to hit the field.

On the waters, Bobby Cassin is back for his second year as head coach of the Belleville crew team. The Bucs enjoyed an excellent year on the high seas in '90 and a majority of that team is back this spring. The Bucs should be racing in the weekly "Flick" races in Philadelphia and should be in top form for the tough regattas that

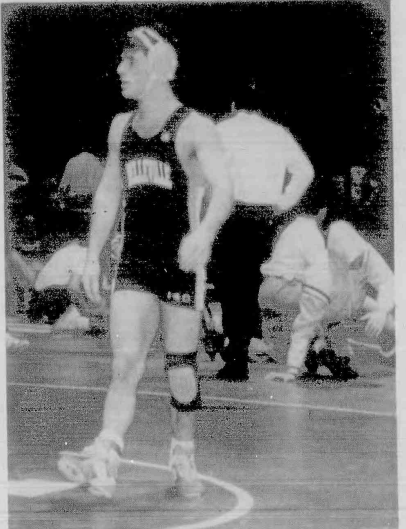
climax the crew season in May.

The Belleville golf team should once again be very competitive under the direction of veteran coach Gene D'Allesandro. Year in and year out, the Bucs excel on the links and 1990 was no exception. The team posted a record of 19-1 and set a new team record for most victories in a season. To make matters even more interesting, the '90 Bucs lost just one player to graduation. It could be another solid season on the links at Belleville.

The track team, coached by John Tosato and Karen Portuese will look to stay in the thick of the NNJL race in 1991. The Bucs should have a good turnout of athletes after the indoor track campaign.

Finally, the tennis team, coached by Tony Salaresco to improve on last seasons performance. There is a strong nucleus of players coming back and the Bucs will need them because the NNJL Pacific Division is usually one of the strongest in the area for mens' tennis.

As mentioned, practices start this week. The games and matches usually start the first week of April. We'll have weekly coverage of the teams starting next week. Also, we'll have the schedules within the next two weeks.



Bucs' Vinnie DeSimone paces the mat prior to match in regions last weekend. DeSimone advanced to the quarterfinal round of the tournament.



Forward Dennis De Work watches flight of ball during recent game. De Work, a sophomore, averaged 14 points a game this season. He was named Honorable Mention, NNJL. (Photos by Michele Suchomel)

DeBenedetto bowls 299 game at Brunswick Olympic Lanes

21 year old Michael DeBenedetto Jr. could become a regular name on the Pro Bowlers tour one day. The native of Belleville has flirted with perfection on the lanes, coming within one pin of a 300 game last summer.

On July 30, 1990, DeBenedetto rolled a 299 at the Olympic Bowling Center on Washington Avenue in Belleville. DeBenedetto threw 11 straight strikes before knocking down nine of the last ten pins on his last ball.

DeBenedetto was presented with a rin from the American Bowling Congress last October at the Brunswick Center.

The Belleville High School grad also bowled a phenomenal series in late September of last year, bowling a 756 combined for three games. In one of those games, he rolled a 290. He has also won many tournaments throughout the past

four years. Perhaps his best award was helping the '86 Buc bowling team win the NNJL Passaic-Essex championship. Then a senior, DeBenedetto had a high game of 278 and he bowled 20 games of 200 or better. For two straight years, he was named first team, NNJL.

DeBenedetto is still in pursuit of that 300 game and he'll see plenty of action in hopes of attaining perfection. In January, he bowled in Las Vegas in the National Amateur Open Invitational. This week, he is bowling in the Pro-Am tour, having gained invitation by winning the King of the Hill tournament which is held every week at Brunswick Olympic.

Congratulations to Michael DeBenedetto on some tremendous accomplishments. We'll keep track on his upcoming competitions and his quest for that 300 game.

RECREATION ROUNDUP

Attention all Teachers!

The Belleville Recreation Department announces that applications for Summer Recreation positions are now available.

Playground director positions are open to teachers and those who will have completed their third year of college by summer 1991.

Preference is given to full-time teachers and college seniors majoring in recreation, physical education, teaching and psychology. Previous leadership in recreation settings and/or outstanding athletic ability is a plus.

Applicants must also have good organizational skills. There will be few positions open and person desiring summer employment are urged to apply promptly.

Persons wishing to apply should phone the Recreation Department office at 450-3422 weekdays for applications. Interviews will be scheduled in the Springtime. Potential applicants must be teachers or college students working toward a teaching degree and must be available for seven straight weeks, from June 24 to Aug. 9.

All returning employees who qualify must also re-apply.

League director needed

The Belleville Department of Recreation & Cultural Affairs is seeking one or two adult men to serve as league directors for Spring and Fall sports. A man or woman is needed for our girls' softball league. The part-time positions entail supervision of league game-officials, assigning umpires/referees, re-scheduling rainouts, writing press releases and charting players' participation records.

Anyone interested must reside in Belleville and be available five nights a week and Saturdays. Qualified applicants must be sport-minded, responsible and must work well with people. These positions would also be good experience for a college student majoring in recreation/physical education. For further information or to apply, please contact the

Recreation Department at 450-3422.

Pre-school registration

The Belleville Department of Recreation & Cultural Affairs is accepting registration for the pre-school play program for 4 year old children. The program consists of games, stories, songs, art, outside play when weather permits, short rest periods and occasional holiday parties especially designed for pre-school children.

A session is from 9 a.m. to 11 a.m. five days a week with class limited to 23 students. The cost of the 32 week session is \$100. The mothers of the children accepted must participate by serving one duty day about every 8 or 9 days according to a published schedule.

School will begin on Monday, September 16, 1991 under the leadership of Mary Anne Lopreato, and will run through May 1992.

Children born between October 1986 - September 1987 who will enter kindergarten in September 1992 are eligible. Participants must be Belleville residents. Since there are just a limited number of openings, applications will be accepted on a first come - first served basis only.

A.S.A. umpire tests

The Belleville A.S.A. Umpire's Association will be conducting the A.S.A. Softball Umpire's Test on April 15 at 7 p.m. at the Rec House, 407 Joramemon St. Any adult, male or female, interested in taking the test should call the Belleville Recreation Department at 450-3422 to obtain an application. A \$20 non-refundable exam fee must accompany each application.

Persons who register for the test can attend the A.S.A. Softball Rules Clinics, 6:30 p.m. March 19, March 26 and April 2 at the Belleville Recreation Department. These clinics are designed to prepare all potential umpires for the test on April 15. The clinics will be conducted by Frank C. Amico, Belleville's Umpire-in-Chief.

Registration deadline is March 22. The course and test are open to

all persons 18 years of age and older. A 70% passing grade will be required. Successful applicants will then be qualified to umpire A.S.A. softball after paying membership dues and will be responsible for securing their own work assignments.

Baseball/softball applications

The Belleville Recreation Department is pleased to announce that applications for all Recreation baseball and softball programs are available in all public and parochial school offices and at the Recreation Department office.

Boys 8-9 can play Peanut League Baseball; 10-12 year old boys can play Junior League Baseball; and 13-15 year old boys are eligible for Senior League Baseball. Girls ages 8-14 can apply for all levels of Recreation softball, including the Suburban team. Specific league structure/breakdowns for girls' softball will be determined after the registration deadline. In order to qualify for any league, the child must reach the minimum age before Aug. 1, and he/she cannot exceed the maximum age by July 31.

High school freshmen or J.V. team players, or Suburban league team players (7th and 8th grade) are not eligible for the Rec. leagues. All applications must be returned to the Rec. House with birth certificates by March 22. Players trying out for the previously mentioned teams should complete Rec. applications before the deadline in case they get cut.

In all cases, the applications must be completed in full and signed by a parent, and all returning players must re-apply. Applications accepted after the March 22 deadline will be considered late and will be treated accordingly. Late applications cannot be guaranteed entry into the league. The Rec. House (407 Joramemon Street) hours for registration are Monday, Friday, 8:30 a.m. - 12 noon and 1:00 - 4:00 p.m. Beginning Feb. 20, the office will also be open Wednesdays from 6 to 7:30 p.m. for registration. All children attending required practices will play in every game.

7 Bucs going to Princeton

(continued from page 11)

teammates.

Belleville's last winner was co-captain Dan Hywel, Danny technical felled Jim Raymond of Palisades Park in 4-28. Then he decked Gary Passanti of Clifton in only 2:21. And then he flattened Gary Boesch of North Bergen in 1:56 of the opening period.

It was Hywel's third straight Region 2 crown. He won as a soph in 1989 at 145 pounds, then moved up to 152 as a junior and won the region in 1990. Now, he owns the 160 pound crown for the 1991 season. Danny will take his 19-1 record to Jadium Gymnasium and attempt to win a state title, possibly in a return match with Evan LaManna of Elmwood Park. LaManna beat Danny by a point last year in the state tournament wrestlebacks.

The remainder of the Region 2 final round produced these winners:

- 103 - Rich Bustamante - St. Benedict's
- 112 - Blake Maffei - Caldwell
- 119 Anthony Mielnicki - Nutley
- 125 - Junior Nardone - Belleville
- 130 - Joe Paladino - Ridgeland Park
- 135 - Eric Brown - Paterson East Side
- 140 - Brian O'Donnell - Kearny
- 145 - Lee Hands - Belleville
- 152 - Mike Kwapiński - Caldwell
- 160 - Dan Hywel - Belleville
- 171 - Anthony Ballard - St. Benedict's
- 189 - Kenya Monour - St. Benedict's
- 275 - Mike Valenti - Hasbrouck Heights

Nutley's Anthony Mielnicki was voted the tournament's Outstanding Wrestler while Cliffside Park's Mike Dilisio won the Region 2 Coach of the Year award.

As expected, District 7 dominated the proceedings, winning eight of the 13 weight classes and finishing second three times.

BUC NOTES: Bragging time! My picks for District 7 were pretty snappy. I'll out of 13 isn't too bad for an old man!... The officiating at Region 2 was as bad as it could be.

It's a wonder that these clods were actually paid for the time they put in. On one occasion, both officials were so busy laughing with each other they forgot to stop the boys from wrestling at the buzzer. The officials from the next mat had to run across the gym and stop the action. What a joke!... St. Benedict's was crowned the 1990-91 Region 2 champion with a power index of 31.85. Belleville tied second with a score of 31.82. With so much on the line, shouldn't someone be asking the powers that be to double check the scores, especially when the difference is a mere .03 of a point?... Answer to last week's quiz - BHS won its first District 7 title in the 1974-75 season. Individual winners were Carl Arlt 101, Vince Mustachio 108, Anthony Villano 129, Chris Tremel 135 and Robert Villano at 148... One final statement here and it must be said regardless of the circumstances. Head coach Joe Nivocchia has done more with less material than anyone, anywhere. His coaching staff is smaller than all but three teams in our district. He must make decisions on who wrestles and who doesn't, as do all head coaches. Yet there are those who will never give him his proper due. Please, have enough sense and maturity to accept his decisions. His record speaks for itself. If a young man does not wrestle, it's because he earned that status, not because someone did him a dirty deed. This writer considers him to be the best in the business, as do most of his peers. He's the best coach around, he should have the best group of supporters to make his job a bit easier...

COUPON SPECIAL CAR WASH

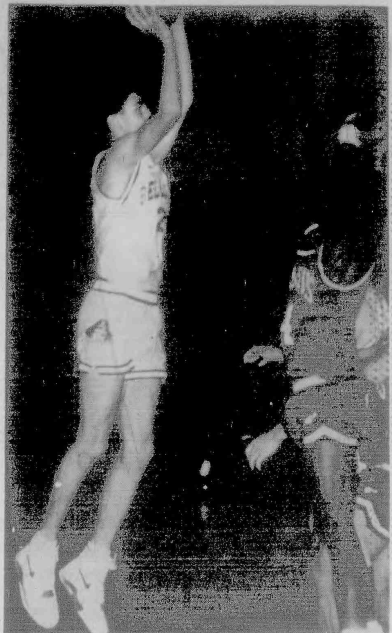
\$5.00 + Tax
For Full Service

Exterior \$4.25 + Tax
(With This Coupon)
EXPIRES 3/31/91

FRANKIE'S FUTURMATIC BRUSHLESS CAR WASH

305 Broad St. • Bloomfield
748-9459

Open Mon - Sat 8 - 6
and Sun 8 - 4



Dennis DeWork has his eyes on two points during recent Buccaneer victory. Only a sophomore, DeWork will be a key player on future teams. (Photo by Michele Suchiome)

Buc Shots

(continued from page 11)

record and strong alliance in the east. The top seed should either be Syracuse or Duke in the east. The final factor will be how the two teams do in their respective conference post season games this weekend.

WE'LL CONTINUE OUR FEATURE on Belleville boys' basketball players who scored 1,000 or more points in next weeks issue.

THIS WEEK'S QUIZ

Name the participants in the 1987 Final Four. Which teams played in the championship game that year? Who coached the four teams in the Final Four? Where was the Final Four contested in 1987?

THE LEGEND IS COMING TO BELLEVILLE N.J.



GRAND OPENING PRE-SALE STARTS MARCH 16, 1991

A SERIOUS CO-ED FITNESS CENTER, EQUIPPED FOR EVERYBODY WHO WANTS RESULTS

We Feature A 25,000 Sq. Ft. State Of The Art Fitness Facility, Consisting Of 3,000 Sq. Ft. Aerobics Center • Hi-Tech Computerized Cardiovascular Equipment • Cybex Circuits • Child Care Service • One On One Personalized Training • Towel Service • Saunas, Tanning And Much, Much More

COME JOIN US AND BE PART OF THE LEGEND

For Further Information Call

201-751-6999

471 Cortlandt St. • Belleville, NJ • 07109

SOFTBALL UNIFORMS

- * LOWEST PRICES
- * BEST LETTERING
- * QUICK DELIVERY

Visit our showroom, You'll be glad you did!
(Corner of Cortlandt and Joramemon) 1 Block up from K-Mart
TEAM AND EQUIPMENT DISCOUNTS!!

NATIONAL SPORTSWEAR

368 CORTLANDT ST. BELLEVILLE, NJ 07109

(201) 759-2005

Spring Break Special

No matter where you purchased your Ford or Lincoln/Mercury, we will service it and also honor your warranty.

MOTORCRAFT ENGINE TUNE-UP SPECIAL

Valid state tune-up not. Installation of Motorcraft Spark Plug, inspect, clean, replace, adjust, clean, oil, and filter. (Excludes 1.6L, 1.8L, 2.0L, 2.3L, 2.5L, 2.8L, 3.0L, 3.3L, 3.8L, 4.0L, 4.6L, 5.0L, 5.4L, 5.7L, 6.0L, 6.4L, 6.8L, 7.0L, 7.3L, 7.5L, 7.8L, 8.0L, 8.3L, 8.6L, 8.9L, 9.0L, 9.3L, 9.7L, 10.0L, 10.3L, 10.6L, 10.9L, 11.0L, 11.3L, 11.6L, 11.9L, 12.0L, 12.3L, 12.6L, 12.9L, 13.0L, 13.3L, 13.6L, 13.9L, 14.0L, 14.3L, 14.6L, 14.9L, 15.0L, 15.3L, 15.6L, 15.9L, 16.0L, 16.3L, 16.6L, 16.9L, 17.0L, 17.3L, 17.6L, 17.9L, 18.0L, 18.3L, 18.6L, 18.9L, 19.0L, 19.3L, 19.6L, 19.9L, 20.0L, 20.3L, 20.6L, 20.9L, 21.0L, 21.3L, 21.6L, 21.9L, 22.0L, 22.3L, 22.6L, 22.9L, 23.0L, 23.3L, 23.6L, 23.9L, 24.0L, 24.3L, 24.6L, 24.9L, 25.0L, 25.3L, 25.6L, 25.9L, 26.0L, 26.3L, 26.6L, 26.9L, 27.0L, 27.3L, 27.6L, 27.9L, 28.0L, 28.3L, 28.6L, 28.9L, 29.0L, 29.3L, 29.6L, 29.9L, 30.0L, 30.3L, 30.6L, 30.9L, 31.0L, 31.3L, 31.6L, 31.9L, 32.0L, 32.3L, 32.6L, 32.9L, 33.0L, 33.3L, 33.6L, 33.9L, 34.0L, 34.3L, 34.6L, 34.9L, 35.0L, 35.3L, 35.6L, 35.9L, 36.0L, 36.3L, 36.6L, 36.9L, 37.0L, 37.3L, 37.6L, 37.9L, 38.0L, 38.3L, 38.6L, 38.9L, 39.0L, 39.3L, 39.6L, 39.9L, 40.0L, 40.3L, 40.6L, 40.9L, 41.0L, 41.3L, 41.6L, 41.9L, 42.0L, 42.3L, 42.6L, 42.9L, 43.0L, 43.3L, 43.6L, 43.9L, 44.0L, 44.3L, 44.6L, 44.9L, 45.0L, 45.3L, 45.6L, 45.9L, 46.0L, 46.3L, 46.6L, 46.9L, 47.0L, 47.3L, 47.6L, 47.9L, 48.0L, 48.3L, 48.6L, 48.9L, 49.0L, 49.3L, 49.6L, 49.9L, 50.0L, 50.3L, 50.6L, 50.9L, 51.0L, 51.3L, 51.6L, 51.9L, 52.0L, 52.3L, 52.6L, 52.9L, 53.0L, 53.3L, 53.6L, 53.9L, 54.0L, 54.3L, 54.6L, 54.9L, 55.0L, 55.3L, 55.6L, 55.9L, 56.0L, 56.3L, 56.6L, 56.9L, 57.0L, 57.3L, 57.6L, 57.9L, 58.0L, 58.3L, 58.6L, 58.9L, 59.0L, 59.3L, 59.6L, 59.9L, 60.0L, 60.3L, 60.6L, 60.9L, 61.0L, 61.3L, 61.6L, 61.9L, 62.0L, 62.3L, 62.6L, 62.9L, 63.0L, 63.3L, 63.6L, 63.9L, 64.0L, 64.3L, 64.6L, 64.9L, 65.0L, 65.3L, 65.6L, 65.9L, 66.0L, 66.3L, 66.6L, 66.9L, 67.0L, 67.3L, 67.6L, 67.9L, 68.0L, 68.3L, 68.6L, 68.9L, 69.0L, 69.3L, 69.6L, 69.9L, 70.0L, 70.3L, 70.6L, 70.9L, 71.0L, 71.3L, 71.6L, 71.9L, 72.0L, 72.3L, 72.6L, 72.9L, 73.0L, 73.3L, 73.6L, 73.9L, 74.0L, 74.3L, 74.6L, 74.9L, 75.0L, 75.3L, 75.6L, 75.9L, 76.0L, 76.3L, 76.6L, 76.9L, 77.0L, 77.3L, 77.6L, 77.9L, 78.0L, 78.3L, 78.6L, 78.9L, 79.0L, 79.3L, 79.6L, 79.9L, 80.0L, 80.3L, 80.6L, 80.9L, 81.0L, 81.3L, 81.6L, 81.9L, 82.0L, 82.3L, 82.6L, 82.9L, 83.0L, 83.3L, 83.6L, 83.9L, 84.0L, 84.3L, 84.6L, 84.9L, 85.0L, 85.3L, 85.6L, 85.9L, 86.0L, 86.3L, 86.6L, 86.9L, 87.0L, 87.3L, 87.6L, 87.9L, 88.0L, 88.3L, 88.6L, 88.9L, 89.0L, 89.3L, 89.6L, 89.9L, 90.0L, 90.3L, 90.6L, 90.9L, 91.0L, 91.3L, 91.6L, 91.9L, 92.0L, 92.3L, 92.6L, 92.9L, 93.0L, 93.3L, 93.6L, 93.9L, 94.0L, 94.3L, 94.6L, 94.9L, 95.0L, 95.3L, 95.6L, 95.9L, 96.0L, 96.3L, 96.6L, 96.9L, 97.0L, 97.3L, 97.6L, 97.9L, 98.0L, 98.3L, 98.6L, 98.9L, 99.0L, 99.3L, 99.6L, 99.9L, 100.0L, 100.3L, 100.6L, 100.9L, 101.0L, 101.3L, 101.6L, 101.9L, 102.0L, 102.3L, 102.6L, 102.9L, 103.0L, 103.3L, 103.6L, 103.9L, 104.0L, 104.3L, 104.6L, 104.9L, 105.0L, 105.3L, 105.6L, 105.9L, 106.0L, 106.3L, 106.6L, 106.9L, 107.0L, 107.3L, 107.6L, 107.9L, 108.0L, 108.3L, 108.6L, 108.9L, 109.0L, 109.3L, 109.6L, 109.9L, 110.0L, 110.3L, 110.6L, 110.9L, 111.0L, 111.3L, 111.6L, 111.9L, 112.0L, 112.3L, 112.6L, 112.9L, 113.0L, 113.3L, 113.6L, 113.9L, 114.0L, 114.3L, 114.6L, 114.9L, 115.0L, 115.3L, 115.6L, 115.9L, 116.0L, 116.3L, 116.6L, 116.9L, 117.0L, 117.3L, 117.6L, 117.9L, 118.0L, 118.3L, 118.6L, 118.9L, 119.0L, 119.3L, 119.6L, 119.9L, 120.0L, 120.3L, 120.6L, 120.9L, 121.0L, 121.3L, 121.6L, 121.9L, 122.0L, 122.3L, 122.6L, 122.9L, 123.0L, 123.3L, 123.6L, 123.9L, 124.0L, 124.3L, 124.6L, 124.9L, 125.0L, 125.3L, 125.6L, 125.9L, 126.0L, 126.3L, 126.6L, 126.9L, 127.0L, 127.3L, 127.6L, 127.9L, 128.0L, 128.3L, 128.6L, 128.9L, 129.0L, 129.3L, 129.6L, 129.9L, 130.0L, 130.3L, 130.6L, 130.9L, 131.0L, 131.3L, 131.6L, 131.9L, 132.0L, 132.3L, 132.6L, 132.9L, 133.0L, 133.3L, 133.6L, 133.9L, 134.0L, 134.3L, 134.6L, 134.9L, 135.0L, 135.3L, 135.6L, 135.9L, 136.0L, 136.3L, 136.6L, 136.9L, 137.0L, 137.3L, 137.6L, 137.9L, 138.0L, 138.3L, 138.6L, 138.9L, 139.0L, 139.3L, 139.6L, 139.9L, 140.0L, 140.3L, 140.6L, 140.9L, 141.0L, 141.3L, 141.6L, 141.9L, 142.0L, 142.3L, 142.6L, 142.9L, 143.0L, 143.3L, 143.6L, 143.9L, 144.0L, 144.3L, 144.6L, 144.9L, 145.0L, 145.3L, 145.6L, 145.9L, 146.0L, 146.3L, 146.6L, 146.9L, 147.0L, 147.3L, 147.6L, 147.9L, 148.0L, 148.3L, 148.6L, 148.9L, 149.0L, 149.3L, 149.6L, 149.9L, 150.0L, 150.3L, 150.6L, 150.9L, 151.0L, 151.3L, 151.6L, 151.9L, 152.0L, 152.3L, 152.6L, 152.9L, 153.0L, 153.3L, 153.6L, 153.9L, 154.0L, 154.3L, 154.6L, 154.9L, 155.0L, 155.3L, 155.6L, 155.9L, 156.0L, 156.3L, 156.6L, 156.9L, 157.0L, 157.3L, 157.6L, 157.9L, 158.0L, 158.3L, 158.6L, 158.9L, 159.0L, 159.3L, 159.6L, 159.9L, 160.0L, 160.3L, 160.6L, 160.9L, 161.0L, 161.3L, 161.6L, 161.9L, 162.0L, 162.3L, 162.6L, 162.9L, 163.0L, 163.3L, 163.6L, 163.9L, 164.0L, 164.3L, 164.6L, 164.9L, 165.0L, 165.3L, 165.6L, 165.9L, 166.0L, 166.3L, 166.6L, 166.9L, 167.0L, 167.3L, 167.6L, 167.9L, 168.0L, 168.3L, 168.6L, 168.9L, 169.0L, 169.3L, 169.6L, 169.9L, 170.0L, 170.3L, 170.6L, 170.9L, 171.0L, 171.3L, 171.6L, 171.9L, 172.0L, 172.3L, 172.6L, 172.9L, 173.0L, 173.3L, 173.6L, 173.9L, 174.0L, 174.3L, 174.6L, 174.9L, 175.0L, 175.3L, 175.6L, 175.9L, 176.0L, 176.3L, 176.6L, 176.9L, 177.0L, 177.3L, 177.6L, 177.9L, 178.0L, 178.3L, 178.6L, 178.9L, 179.0L, 179.3L, 179.6L, 179.9L, 180.0L, 180.3L, 180.6L, 180.9L, 181.0L, 181.3L, 181.6L, 181.9L, 182.0L, 182.3L, 182.6L, 182.9L, 183.0L, 183.3L, 183.6L, 183.9L, 184.0L, 184.3L, 184.6L, 184.9L, 185.0L, 185.3L, 185.6L, 185.9L, 186.0L, 186.3L, 186.6L, 186.9L, 187.0L, 187.3L, 187.6L, 187.9L, 188.0L, 188.3L, 188.6L, 188.9L, 189.0L, 189.3L, 189.6L, 189.9L, 190.0L, 190.3L, 190.6L, 190.9L, 191.0L, 191.3L, 191.6L, 191.9L, 192.0L, 192.3L, 192.6L, 192.9L, 193.0L, 193.3L, 193.6L, 193.9L, 194.0L, 194.3L, 194.6L, 194.9L, 195.0L, 195.3L, 195.6L, 195.9L, 196.0L, 196.3L, 196.6L, 196.9L, 197.0L, 197.3L, 197.6L, 197.9L, 198.0L, 198.3L, 198.6L, 198.9L, 199.0L, 199.3L, 199.6L, 199.9L, 200.0L, 200.3L, 200.6L, 200.9L, 201.0L, 201.3L, 201.6L, 201.9L, 202.0L, 202.3L, 202.6L, 202.9L, 203.0L, 203.3L, 203.6L, 203.9L, 204.0L, 204.3L, 204.6L, 204.9L, 205.0L, 205.3L, 205.6L, 205.9L, 206.0L, 206.3L, 206.6L, 206.9L, 207.0L, 207.3L, 207.6L, 207.9L, 208.0L, 208.3L, 208.6L, 208.9L, 209.0L, 209.3L, 209.6L, 209.9L, 210.0L, 210.3L, 210.6L, 210.9L, 211.0L, 211.3L, 211.6L, 211.9L, 212.0L, 212.3L, 212.6L, 212.9L, 213.0L, 213.3L, 213.6L, 213.9L, 214.0L, 214.3L, 214.6L, 214.9L, 215.0L, 215.3L, 215.6L, 215.9L, 216.0L, 216.3L, 216.6L, 216.9L, 217.0L, 217.3L, 217.6L, 217.9L, 218.0L, 218.3L, 218.6L, 218.9L, 219.0L, 219.3L, 219.6L, 219.9L, 220.0L, 220.3L, 220.6L, 220.9L, 221.0L, 221.3L, 221.6L, 221.9L, 222.0L, 222.3L, 222.6L, 222.9L, 223.0L, 223.3L, 223.6L, 223.9L, 224.0L, 224.3L, 224.6L, 224.9L, 225.0L, 225.3L, 225.

DuHaime, Caruso provided senior leadership

(continued from page 11) fortunately did not need surgery. He missed the first month of the season before returning in January. "Arty was held down a little because of the injury," Roll said. "But he provided so much leadership on the floor. He never complained about his leg and I know it gave him trouble at times. He is a hard nosed player."

Senior forward John Sipp played well down the stretch. His best game was against Bloomfield when he turned in eight points. His excellent play on the boards and good ball handling made Sipp a valuable player off the bench. Junior forward Trey Talmadge was the Bucks leading scorer with nearly 19 points a game. At 6'4" tall, Talmadge gave the fans plenty of excitement with his break away dunks. Talmadge has all the tools to be one of the best players in the county next season. For this season, he was named first team, NNJIL.

Sophomore forward Dennis DeWork averaged nearly 14 points a game in his first full season of varsity action.

"Dennis became much more consistent during the course of the season," Roll said. "The improvement in his play was quite notica-

ble." DeWork, a 6'4" forward should team with Talmadge next winter to form a very good front line. This season, he was named Honorable Mention, NNJIL.

Junior guard Sal Straface averaged 11 points a game. A second team NNJIL selection, Straface is perhaps the teams best three point shooter. He also has excellent speed and is a good ball handler. Straface could perhaps be the point guard on next years team.

Other players who are expected to make an impact next year include Bryant Jiminez, Michael Vista, Ken Johansen and Michael Kimball. Freshman Mike Mundy and Frank Means have also shown excellent promise.

Jiminez, Vista and Johansen saw considerable varsity action this winter and could figure rather prominently in Roll's plans next season.

"The JV and freshman teams both played very well this season," Roll said. "There were a lot of promising aspects to the season. We played well in the league and with a few breaks, we could have been even better."

The Bucks were 5-9 in the Pacific Division and lost those four games by one point each. Belleville's biggest win in the league and perhaps biggest victory of the season came in early February at home against St. Joe's Montvale. The Bergen County team came in with a 14-2 record and Belleville won a one point thriller. The loss pretty much cost St. Joe's the league title.

"That game showed our kids they could play with the best in the league," Roll said. "Not only could we play with them, we could beat them."

The Bucks biggest obstacle this season was playing consistently. It's something the '91-92 squad must overcome.

"The kids have to play," Roll said. "What more can I say? They have to go to basketball camp and play against other competition. They also have to play against each other. It's just a matter of them playing as much as possible and also working in the weight room."

There should be plenty of competition for spots on the varsity roster next November. But this is March and preparation for the '91-92 season should be starting now. The Bucks are on the verge of being a very good team next season. What happens now will determine if the team is ready to clear that final obstacle.

RESOLVED BY THE MUNICIPAL COUNCIL OF BELLEVILLE, N.J.

WHEREAS, the Township of Belleville desires to retain Bruno Associates, Inc., 1455 Broad Street, Bloomfield, New Jersey to provide professional knowledge and contacts to obtain available County, State, and Federal aid, and prepare and submit the necessary applications and forms under the direction of the Township Manager and Director of Planning; and

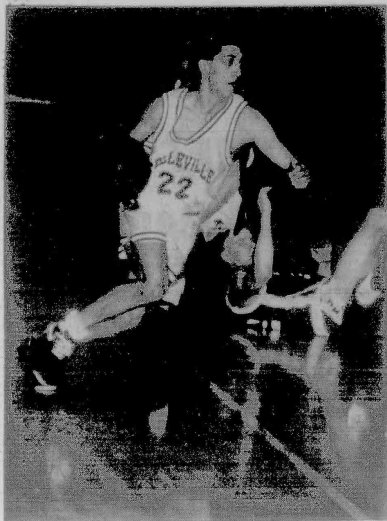
WHEREAS, such specialized services are a professional service and of such a qualitative nature that drawing of specifications is not practical, and professional

services are exempt from public bidding but notice must be published in the Belleville Times in accordance with the Local Public Contracts Law, now, therefore;

It Is Resolved that the Township of Belleville authorize the Mayor and Clerk to sign and attest an agreement with Bruno Associates, Inc. for a sum of \$23,000.00 per year, commencing January 1, 1991 and terminating December 31, 1995, plus the sum of \$250.00 quarterly for expenses, not to exceed \$10,000.00.

Belleville Times
March 7, 1991
Page: 112-69

B99-42



Buc guard Sal Straface drives for basket during season finale with Morris Hills. Straface was recently named second team, NNJIL.

DeMassi PONTIAC

IN LYNDHURST

LAST CHANCE TO SAVE ON 1990 LEFTOVERS

REBATES UP TO

\$1600

ON SELECT NEW MODELS

OR AS LOW AS

8.9% APR

FINANCING

EVERY DAY LOW LEASE PRICES ALL MAKES & MODELS

***** FIVE STAR SERVICE EXCELLENCE AWARD WINNER

Price(s) include(s) all costs to be paid by a consumer, except for licensing, registration and taxes.

LOU DeMASSI'S DISCOUNT CORNER SINCE 1937

939-6100

ALL OUT CLEARANCE OF BETTER USED CARS!

| | |
|---|--|
| '80 CUTLASS 2 DR 4-cyl eng, auto trans, power windows, air cond, 100,000 mi. \$12,482.00. VIN 1G1J1321010101010101. | '80 CELEBRITY 4 DR 4-cyl eng, auto trans, power windows, air cond, 100,000 mi. \$12,482.00. VIN 1G1J1321010101010101. |
| '87 SUBURB 4 DR 4-cyl eng, auto trans, power windows, air cond, 100,000 mi. \$12,482.00. VIN 1G1J1321010101010101. | '87 FIREBIRD 4-cyl eng, auto trans, power windows, air cond, 100,000 mi. \$12,482.00. VIN 1G1J1321010101010101. |
| '88 BARRETTA GT 2 DR 4-cyl eng, auto trans, power windows, air cond, 100,000 mi. \$12,482.00. VIN 1G1J1321010101010101. | '87 BONNEVILLE 4 DR Sedan 4-cyl eng, auto trans, power windows, air cond, 100,000 mi. \$12,482.00. VIN 1G1J1321010101010101. |

"HUNDREDS OF NEW AND USED CARS, TRUCKS & VANS IN STOCK!"

P.S. WE ARE NOT AFRAID OF YOUR TRADE-IN!

Joe Bellavia
PRESIDENT

NEW 1991 CAVALIER VL COUPE
AIR CONDITIONING • AUTOMATIC
MSRP: \$9805
DISCOUNT: \$1410
\$8395

NEW 1991 CAMARO RS COUPE
AIR CONDITIONING • AM/FM ST. CASS.
OVERDRIVE TRANS. • CLOTH BUCKETS
MSRP: \$13,869
DISCOUNT: \$1174
\$12,695

NEW '91 GEO METRO COUPE
AIR CONDITIONING • AM/FM STEREO
MANY OTHERS AVAILABLE TO CHOOSE!
MSRP: \$8206
DISCOUNT: \$1211
\$6995

NEW 1991 LESABRE CUSTOM SEDAN
STEREO CASSETTE • POWER SEAT
POWER LOCKS • POWER WINDOWS/LOCKS
MSRP: \$19,719
DISCOUNT: \$3324
\$16,395

NEW 1991 SKYLARK
AIR CONDITIONING • AUTOMATIC
AIR-FIN STEREO • TILT WHEEL
MSRP: \$12,688
DISCOUNT: \$2293
\$10,395

NEW 1990 REGAL CUSTOM
STEREO CASSETTE • ELECTRIC MIRRORS
FULL POWER • CRUISE
MSRP: \$16,551
DISCOUNT: \$4556
\$13,995

NEW 1991 S10 BLAZER 4 DR
AIR CONDITIONING • OVERDRIVE TRANS.
W/IN. WINDOWS • 4 WHEEL DRIVE
MSRP: \$21,576
DISCOUNT: \$2681
\$18,795

NEW '91 GEO TRACKER 2DR
AIR CONDITIONING • AUTOMATIC
AM/FM STEREO • 4 WHEEL DRIVE
MSRP: \$13,565
DISCOUNT: \$710
\$12,795

NEW 1990 V1500 BLAZER
AIR CONDITIONING • POWER WINDOWS/LOCKS
MSRP: \$22,978
DISCOUNT: \$4193
\$18,785

NEW 1991 FLETSIDE PICKUP W/T
AIR CONDITIONING • AUTOMATIC
POWER STEERING • POWER BRAKES
MSRP: \$15,513
DISCOUNT: \$1427
\$12,085

NEW 1991 LUMINA SEDAN
AIR CONDITIONING • AUTOMATIC
POWER STEERING • POWER BRAKES
MSRP: \$14,731
DISCOUNT: \$2737
\$11,995

'90 GEO METRO
4-cyl eng, auto trans, 100,000 mi. \$5995

'88 CHEVROLET BERETTA 2DR
4-cyl eng, auto trans, 100,000 mi. \$6495

'87 CHEVY CAPRICE
4-cyl eng, auto trans, 100,000 mi. \$7495

'86 BUICK REGAL
4-cyl eng, auto trans, 100,000 mi. \$7495

'89 MITSUBISHI GALANT
4-cyl eng, auto trans, 100,000 mi. \$7995

'86 LINCOLN TOWN CAR
4-cyl eng, auto trans, 100,000 mi. \$7995

'89 COROLLA LT
4-cyl eng, auto trans, 100,000 mi. \$7995

'87 CROWN VICTORIA
4-cyl eng, auto trans, 100,000 mi. \$8295

'88 CHEVROLET CELEBRITY
4-cyl eng, auto trans, 100,000 mi. \$8495

'90 CHEVROLET BERETTA GT
4-cyl eng, auto trans, 100,000 mi. \$9995

'90 GEO TRACKER CONV.
4-cyl eng, auto trans, 100,000 mi. \$10,495

'90 CELEBRITY WAGON
4-cyl eng, auto trans, 100,000 mi. \$11,495

'86 CHEVROLET CONVERSION VAN
4-cyl eng, auto trans, 100,000 mi. \$11,995

'89 S10 BLAZER
4-cyl eng, auto trans, 100,000 mi. \$13,495

'88 CADILLAC ELDOADO
4-cyl eng, auto trans, 100,000 mi. \$15,495

'90 BENTLEY BROUGHAM
4-cyl eng, auto trans, 100,000 mi. \$15,995

'90 CHEVROLET BLAZER 2DR
4-cyl eng, auto trans, 100,000 mi. \$17,695

'90 CADILLAC SEDAN DeVILLE
4-cyl eng, auto trans, 100,000 mi. \$18,995

Price(s) include(s) factory incentives & all costs to be paid by a consumer, except for licensing, registration and taxes.

Bellavia CHEVROLET BUICK GEO

939-6800 • ROUTE 17, E. RUTHERFORD

JUST NORTH OF ROUTE 3 ON ROUTE 17 • OPEN DAILY 9-9; SAT. 9-6 • CALL FOR EASY DIRECTIONS



**TO ALL OUR TROOPS:
WELCOME HOME!
Thanks For A Job Well Done!**

| | | |
|---|--|---|
| NOT JUST NAILS I 751-6887 — Donna — Belleville NOT JUST NAILS II 759-6885 — Belleville | PAUL'S DELI & MEATS 185 High Street NUTLEY 661-4973 | W. KODAK JEWELERS 211 Franklin Avenue NUTLEY 667-4466 |
| Del Polito Haircutters 12 Belleville Avenue Bloomfield 748-8571 | Melandre's Town House 509 Franklin Ave. NUTLEY 667-3100 | VINNIE'S PIZZERIA 227 Centre Street, Nutley 667-1551 Free Delivery |
| PASTELS HAIR SALON 529 Joralemon Street Belleville 450-1444 | Gold Mine Trading 726 Washington Ave., Belleville 450-0503 | Kirner Insurance Agency, Inc. 622 Bloomfield Ave., Bloomfield 743-1468 Fax 743-6807 |
| Moschello Electric Inc. 318 Cortlandt Street Belleville 759-0226/0227 | ALL PHASE INC. 382 Franklin Avenue NUTLEY 661-9675 | Joseph's Photographers 194 Chestnut Street NUTLEY 667-2440 |
| O'Boyle Funeral Home 309 Broad Street Bloomfield 748-1246 | AUREAS SALON 545 Bloomfield Ave., Bloomfield 743-7708 | A-1 Nutrition Store 377 Centre Street NUTLEY 667-9446 |
| J & P CLEANERS 543 Washington Avenue Belleville 759-5728 | Vic & Cathy's from Lake Street 562 Union Avenue Belleville 450-8707 | Gail Smart Set 74 Washington Street Bloomfield 743-6799 |
| Don Luby Roofing Contractor NUTLEY 667-3768 | Biondi Funeral Home 540 Franklin Avenue NUTLEY 661-2800 | Little Star Boutique, Inc. 82 Centre Street NUTLEY ★ 667-8648 |
| S.W. Brown & Son Funeral Home 267 Centre Street Nutley 667-0875 | NANINA'S RESTAURANT 540 Mill Street Belleville 751-1230 | Three Guys From Italy Deli 155 Washington Ave. Belleville 751-5726 |
| ASTRO ELECTRIC Belleville • 759-0037 10% OFF WITH THIS AD | Ciccone Shoe Store 277 Franklin Avenue Nutley 667-1909 | FRADE'S Deli & Caterers 311-313 Union Avenue, Belleville 759-3509 |
| White Oak Hair Designs 86 Union Avenue NUTLEY 667-8909 | Nunzio's Three Corner Diner & Pizzeria Catering for all occasions Nutley 661-2925 | ANGELO'S Shoe Repairs 20 Franklin Avenue, Nutley 661-2884 |
| J & N AMOCO 29-35 Franklin Avenue Nutley 235-9832 | La Monica Memorial Home 299 Bloomfield Avenue Bloomfield 743-4434 | Dancesations — The Ultimate in Dance 40 W. Passaic Ave., Bloomfield 338-1312 Susan Marronzo DeVincenzo, Dir. |
| Dr. Paul Stefanelli 567 Franklin Avenue Belleville 450-0211 | CENTANNI DELI 82 Overlook Avenue Belleville 751-3910 | NUTLEY PET CENTER 406 Main Street Belleville 751-1221 |
| STARR CATERERS 111 Newark Avenue, Belleville 759-6728 | Bellissima Cosmetics 509 Franklin Avenue NUTLEY 667-3100 | Nutley Travel Services 11 Brighton Rd., Clifton • 235-9234 • 777-0440 Office Hours Mon.-Fri. 9-7, Sat. 10-3 |
| DRAPERIES PLUS 305 Bloomfield Avenue NUTLEY 667-9047 | V.L.M. Hair Connections 126 Franklin Avenue Bloomfield 748-8115 | BILL TONES MARKET 95 Harrison Street, Nutley 667-4877 |
| R.J. Lynch & Sons 34 Prospect St., Bloomfield 748-5013 | A Personal Touch Florist 343 Franklin Avenue Nutley 661-4414 | Cafone Printing 231 Washington Ave. Nutley 667-0084 |
| GRANDE & TALBOT 12 Smith Street, Belleville 759-6834 | ABRACADABRA KIDS 217 Franklin Avenue Nutley 284-1004 | Charming Lady Beauty Salon 144 Chestnut Street • Nutley 667-2133 Appointment Only |
| AURIEMMA ELECTRIC 90 Mt. Prospect Ave. Belleville 10% Off With This Ad 751-5926 | Belleville Wine Shop 286 Main Street Belleville 751-1212 | Concorde School of Hair Design 9-11 Ward Street Bloomfield 680-0999 |
| Zarro Funeral Home 145 Harrison Street Bloomfield 743-3433 If No. Ans. 748-2231 | SINCERELY YOURS 397 Centre Street Nutley 235-0345 | GLITTER 202 Franklin Avenue Nutley 235-0069 |

**TO ALL OUR TROOPS:
WELCOME HOME!
Thanks For A Job Well Done!**



| | | |
|---|--|--|
| Nutley Amoco, Inc. 95 Washington Avenue Nutley 661-3466 | BECK'S TV SERVICE CO. 182 Chestnut Street, Nutley 667-0068 • 667-2275 | TCBY <i>The Country's Best Yogurt</i> NUTLEY 226 Franklin Avenue 661-9803 |
| KERNER'S 126 Washington Ave., Belleville 759-3073 | Hole In The Wall Pizzeria 481 Franklin Ave. NUTLEY 667-0747 | THE MEDICINE SHOPPE 559 Franklin Avenue NUTLEY 235-0909 |
| Crompton & Knowles Corp. Atlantic Industries Division Nutley, New Jersey | SALON PAZZAZZ 335 Passaic Avenue NUTLEY 667-8965 | Town & Country Delicatessen 96 Centre Street NUTLEY 667-8338 |
| Washington Barber Shop 188 Washington Avenue NUTLEY • 235-1114 | Realty World Monaco 507 Franklin Avenue, Nutley 667-8000 Marge Monaco, Realtor | Rossmore Pharmacy, Inc. 338 Washington Avenue Belleville 759-1956 |
| MILDRED'S HAIR FASHIONS 301 Bloomfield Ave., Nutley 667-0065 | LISA'S HAIR SALON 327½ Union Avenue, Belleville 450-9414 Lisa Varano, Prop. | ALLWOOD PET CENTER 656 Allwood Road CLIFTON 07012 |
| Thomas Banks Associates, Inc. (Food Facilities Planning) 308 Washington Ave., Nutley 661-2020 | J & R TOWN GETTY 661 Bloomfield Avenue Nutley 661-4848 | Meads-Miller Rug & Furniture Cleaning 143 Franklin Avenue NUTLEY 667-4305 |
| Restaino's Midtown Sporting Goods 309 Franklin Avenue, Nutley 667-7080 | CENTER DRUG STORE 20 Broad Street Bloomfield 748-8296 | JIMMY'S DELI 39 Prospect Street Bloomfield 748-7297 |
| COSTANTINE REALTY 289 Franklin Ave., Nutley 667-7070 Louis Costantine, Realtor | Gift Emporium & Tuxedo Balloons 631 Franklin Avenue NUTLEY 661-2177 | BOOK MARK OF NUTLEY 338 Passaic Avenue NUTLEY 667-6000 |
| CASALE'S PLACE (next to Franklin Theater) 510 Franklin Avenue NUTLEY 667-8503 | Zinicola Baking Co., Inc. 127 King Street NUTLEY 667-1306 | Anthony (Tony Vincent) Petrillo Bloomfield Board of Education Candidate |
| PARK BARBERS 303 Franklin Avenue, Nutley 235-9748 | PLAY GIRL COIFFURES 88 Centre Street, Nutley 661-3591 | Metro Agency 224 Washington Ave. Belleville 751-3400 |
| HANCOX REALTY 226 Hancox Avenue, Nutley 667-9115 Marie Evans, Realtor | Key Travel Unlimited & Cruise Center 31 Carteret Street Bloomfield 748-8900 | WINDHEIM PLUMBING 418-420 Franklin Avenue, Nutley 667-6886 |
| RECORDS REALTY 3 High Street, Nutley, N.J. 667-5500 Marion Peters, Realtor | BLOOMFIELD PET SHOP 55 Washington Street BLOOMFIELD 748-7541 | ABC Wildlife Removal Co., Inc. Raccoons-Skunks-Squirrels 748-1259 |
| HAIR'S OUR PLACE 17 James Street Bloomfield 743-7488 | Security National Bank & Trust Company of New Jersey Nutley — Roseland — Newark | BEAUTY ON A BUDGET 236 Franklin Avenue, Nutley 235-9702 |
| Fred & Son Produce Market 184 Franklin Avenue Belleville 751-4105 | Boulevard Delicatessen 44 W. Passaic Avenue BLOOMFIELD 338-6267 | Wise Owl Nursery School 617 Washington Ave., Belleville 759-1211 |
| Judy's Slipcovers & Draperies 167 Franklin Avenue Nutley 667-7229 | BROUGHTON DELICATESSEN 87 Broughton Avenue BLOOMFIELD 743-1251 | BIANCOLA JEWELERS 507 Franklin Avenue, Nutley 667-3800 |
| LaDucer Insurance Agency 247 Franklin Avenue Nutley 667-4013 | King's Quarter Hair People 119 Washington Street Bloomfield 748-5788 | J & C Market Places 60 Hedden Terrace North Arlington Hot Line Flea Market 997-9535 |
| East Nutley Garage & Body Shop, Inc. 38 Washington Avenue, Nutley 667-0608 | EASTERN SALES 299 Bloomfield Avenue NUTLEY 235-1603 | Guarino Chiropractic Center 858 Joralemon Street Belleville 759-3600 |
| Telephone Jacks Installed 30 years experience Call Bob — 284-1876 | The Trustees, Staff and The Friends of The Belleville Public Library Salute Our Armed Forces in the Gulf | SPOT LIGHT CLEANERS 180-182 Kingsland Street, Nutley 667-3171 Same Day Shirts - 98* |

SHERIFF'S SALE
SUPERIOR (CIAN) J-77
SUPERIOR COURT OF NEW JERSEY, CHANCERY DIVISION, ESSEX COUNTY, DOCKET NO. F-4699-89 THE HOWARD SAVINGS BANK, PLAINTIFF -vs- RICHARD HAUG, et al, DEFENDANTS Execution For Sale of Mortgaged Premises

By virtue of the above stated writ of Execution, to me directed, I shall expose for sale by Public Auction, in SHERIFF'S OFFICE, Essex County Courts Building in Newark, on Tuesday, the 28th day of March 1991, at one-thirty P.M. (Prevaling Time) all that tract or parcel of land and premises, situate, being and lying in the Township of Belleville in the County of Essex and State of New Jersey.

BEGINNING at a point in the westerly line of Garden Avenue therein distant 147.54 feet southerly from the corner formed by the intersection of said line of Garden Avenue with the southerly line of Joralemon Street; and from thence running (1) along said line of Garden Avenue South 40 degrees 56 minutes east 47.54 feet to the northerly corner of Lot No. 3 as shown on Map of Property of Aaron B. Henry and Martha S. Henry filed in the Register's Office of Essex County December 12, 1928; thence running (2) along the southerly line of Lot No. 3 North 49 degrees 4 minutes east 100 feet to the southerly line of Lot No. 5 on said map; thence running (3) along the same southerly line 4 minutes east 100 feet to the westerly line of Garden Avenue and the point of place of BEGINNING.

BEING Lot No. 4 on said map, also known as Block 407 Lot 25 and designated as 215 Garden Avenue on the Tax Maps of the Town of Belleville, New Jersey.

A DEPOSIT OF 20% OF THE BID PRICE IN CASH OR CERTIFIED FUNDS IS REQUIRED AT THE TIME OF SALE.

The approximate amount of the Judgment to be satisfied by said sale is the sum of TWENTY-NINE THOUSAND THREE HUNDRED EIGHTY-ONE DOLLARS AND THIRTY-NINE CENTS (\$29,381.39) together with the costs of this sale.

The Sheriff reserves the right to adjourn the sale from time to time as provided by Law.

Newark, N.J. February 4, 1991
ARMANDO B. PONTOURA, Acting Sheriff
Hutchman & Roman, Attorneys
Belleville Times
Feb. 14, 21, 28,
March 7, 1991
Fee: \$129.72
No. B91-43

SHERIFF'S SALE
SUPERIOR (CIAN) J-308
SUPERIOR COURT OF NEW JERSEY, CHANCERY DIVISION, ESSEX COUNTY, DOCKET NO. F-4699-89 THE HOWARD SAVINGS BANK, A CORP., PLAINTIFF -vs- LINDA M. HAYES, unmaried, et al, DEFENDANTS Execution For Sale of Mortgaged Premises

By virtue of the above stated writ of Execution, to me directed, I shall expose for sale by Public Auction, in SHERIFF'S OFFICE, Essex County Courts Building in Newark, on Tuesday, the 2nd day of April 1991, at one-thirty P.M. (Prevaling Time) The property to be sold is located in the City of Newark in the County of Essex and the State of New Jersey.

Commonly known as 238 North 11th Street, Newark, New Jersey
Tax Lot No. 20 in Block No. 1944.
Dimensions of Lot: (Approximately) 30 feet wide by 101 feet long.
Nearest Cross Street: Situate on the westerly side of North 11th Street, distant 230 feet north of the southerly side of Fourteenth Street.

A full legal description can be found in the Office of the Register of Essex County.

A DEPOSIT OF 20% OF THE BID PRICE IN CASH OR CERTIFIED FUNDS IS REQUIRED AT THE TIME OF SALE.

The approximate amount of the Judgment to be satisfied by said sale is the sum of TWENTY-THOUSAND TWO HUNDRED SIXTY DOLLARS AND FORTY CENTS (\$20,264.40) together with the costs of this sale.

The Sheriff reserves the right to adjourn the sale from time to time as provided by Law.

Newark, N.J. February 21, 1991
ARMANDO B. PONTOURA, Acting Sheriff
Zucker, Goldberg, Becker & Ackerman, Attorneys
Belleville Times
March 7, 14, 21, 28, 1991
Fee: \$90.24
No. B91-37

GOOD DEALS!
at
GOOD YEAR
TIRE & AUTO SERVICE
126 Washington Ave., Nutley
235-9202
Open Mon.-Fri. 7:30 - 5:30
Saturdays 7:30 - 3:30

State Inspection Center
• Most Major Credit Cards Accepted
• National Accounts Welcome

CONCORDE
METRIC
All Season Traction for Import & Export Cars

| BLACKWALL SIZE | PRICE No Trade Needed | PRICE No Trade Needed |
|----------------|-----------------------|-----------------------|
| 155/70-13 | \$21.99 | \$21.99 |
| 155/70-14 | \$23.99 | \$23.99 |
| 155/70-15 | \$25.99 | \$25.99 |

BLACKWALL SIZE
155/70-13 \$21.99
155/70-14 \$23.99
155/70-15 \$25.99

CONCORDE
CALIBRE
All Season Traction for Import & Export Cars

| WHITEWALL SIZE | PRICE No Trade Needed | PRICE No Trade Needed |
|----------------|-----------------------|-----------------------|
| 155/70-13 | \$21.99 | \$21.99 |
| 155/70-14 | \$23.99 | \$23.99 |
| 155/70-15 | \$25.99 | \$25.99 |

WHITEWALL SIZE
155/70-13 \$21.99
155/70-14 \$23.99
155/70-15 \$25.99

CONCORDE
CALIBRE HP
Performance Radial for Imports That's Low on Price

| RAISED WHITE LETTER SIZE | PRICE No Trade Needed | PRICE No Trade Needed |
|--------------------------|-----------------------|-----------------------|
| 155/70-13 | \$21.99 | \$21.99 |
| 155/70-14 | \$23.99 | \$23.99 |
| 155/70-15 | \$25.99 | \$25.99 |

RAISED WHITE LETTER SIZE
155/70-13 \$21.99
155/70-14 \$23.99
155/70-15 \$25.99

GOODYEAR
EAGLE ST
Performance Radial for Imports That's Low on Price

| RAISED WHITE LETTER SIZE | PRICE No Trade Needed | PRICE No Trade Needed |
|--------------------------|-----------------------|-----------------------|
| 155/70-13 | \$21.99 | \$21.99 |
| 155/70-14 | \$23.99 | \$23.99 |
| 155/70-15 | \$25.99 | \$25.99 |

RAISED WHITE LETTER SIZE
155/70-13 \$21.99
155/70-14 \$23.99
155/70-15 \$25.99

GOODYEAR
EAGLE GT-4
High Performance Plus All Season Traction

| BLACK SERIATED LETTER SIZE | PRICE No Trade Needed | PRICE No Trade Needed |
|----------------------------|-----------------------|-----------------------|
| 155/70-13 | \$21.99 | \$21.99 |
| 155/70-14 | \$23.99 | \$23.99 |
| 155/70-15 | \$25.99 | \$25.99 |

BLACK SERIATED LETTER SIZE
155/70-13 \$21.99
155/70-14 \$23.99
155/70-15 \$25.99

COUPON
OIL FILTER, CHASSIS LUBE & OIL CHANGE
\$18
Lubricate chassis, drain oil and refill with up to 5 quarts of major brand motor oil, and install new oil filter.
Special diesel fuel may result in extra charges.

COUPON
ENGINE TUNE-UP
\$19.95
Includes computerized engine performance analysis. Check battery, starting, charging, combustion systems. Install new spark plugs, set timing, adjust carburetor (where applicable - extra charge if removal is necessary). Service 1 month or 1000 miles, whichever comes first.

COUPON
FUEL INJECTION SERVICE
\$49
Safety Removes Fuel Burning Deposits
Lubricates & Conditions the Injection System
Restores Accurate Injection Spray Patterns
Protects the System From Rust & Corrosion

NEW JERSEY LOCATIONS
BERGENFIELD 385-3110 Bob Shapiro, Manager 256-5757
LITTLE FALLS 342-5602 Brian Kirk, Manager 672-6720
HACKENSACK 342-5602
ORANGE 672-6720
NUTLEY 126 Washington Avenue Kevin Kirk, Manager

NEW YORK LOCATIONS
STATEN ISLAND (212) 733-6341 (718) 442-4078
WHITESTONE (718) 767-7754 Ron Mancuso, Manager

SHERIFF'S SALE
SUPERIOR (CIAN) J-380
SUPERIOR COURT OF NEW JERSEY, CHANCERY DIVISION, ESSEX COUNTY, DOCKET NO. F-4699-89 THE HOWARD SAVINGS BANK, A CORP., PLAINTIFF -vs- ROYAL M. JONES, et al, DEFENDANTS Execution For Sale of Mortgaged Premises

By virtue of the above stated writ of Execution, to me directed, I shall expose for sale by Public Auction, in SHERIFF'S OFFICE, Essex County Courts Building in Newark, on Tuesday, the 12th day of March 1991, at one-thirty P.M. (Prevaling Time) THE PROPERTY TO BE SOLD IS LOCATED IN THE TOWNSHIP OF IRVINGTON IN THE COUNTY OF ESSEX AND STATE OF NEW JERSEY.

COMMONLY KNOWN AS: 49 WEST STRATFORD PLACE, IRVINGTON, NJ
TAX LOT NO. 10 IN BLOCK NO. 271.

A full legal description can be found in the Office of the Register of Essex County.

A DEPOSIT OF 20% OF THE BID PRICE IN CASH OR CERTIFIED FUNDS IS REQUIRED AT THE TIME OF SALE.

The approximate amount of the Judgment to be satisfied by said sale is the sum of TWENTY-THOUSAND TWO HUNDRED SIXTY DOLLARS AND FORTY CENTS (\$20,264.40) together with the costs of this sale.

The Sheriff reserves the right to adjourn the sale from time to time as provided by Law.

Newark, N.J. February 21, 1991
ARMANDO B. PONTOURA, Acting Sheriff
Zucker, Goldberg, Becker & Ackerman, Attorneys
Belleville Times
March 7, 14, 21, 28, 1991
Fee: \$90.24
No. B91-37

SHERIFF'S SALE
SUPERIOR (CIAN) J-380
SUPERIOR COURT OF NEW JERSEY, CHANCERY DIVISION, ESSEX COUNTY, DOCKET NO. F-4699-89 THE HOWARD SAVINGS BANK, A CORP., PLAINTIFF -vs- ROYAL M. JONES, et al, DEFENDANTS Execution For Sale of Mortgaged Premises

By virtue of the above stated writ of Execution, to me directed, I shall expose for sale by Public Auction, in SHERIFF'S OFFICE, Essex County Courts Building in Newark, on Tuesday, the 12th day of March 1991, at one-thirty P.M. (Prevaling Time) THE PROPERTY TO BE SOLD IS LOCATED IN THE TOWNSHIP OF IRVINGTON IN THE COUNTY OF ESSEX AND STATE OF NEW JERSEY.

COMMONLY KNOWN AS: 49 WEST STRATFORD PLACE, IRVINGTON, NJ
TAX LOT NO. 10 IN BLOCK NO. 271.

A full legal description can be found in the Office of the Register of Essex County.

A DEPOSIT OF 20% OF THE BID PRICE IN CASH OR CERTIFIED FUNDS IS REQUIRED AT THE TIME OF SALE.

The approximate amount of the Judgment to be satisfied by said sale is the sum of TWENTY-THOUSAND TWO HUNDRED SIXTY DOLLARS AND FORTY CENTS (\$20,264.40) together with the costs of this sale.

The Sheriff reserves the right to adjourn the sale from time to time as provided by Law.

Newark, N.J. February 21, 1991
ARMANDO B. PONTOURA, Acting Sheriff
Zucker, Goldberg, Becker & Ackerman, Attorneys
Belleville Times
March 7, 14, 21, 28, 1991
Fee: \$90.24
No. B91-37

GOOD YEAR
TIRE & AUTO SERVICE
126 Washington Ave., Nutley
235-9202
Open Mon.-Fri. 7:30 - 5:30
Saturdays 7:30 - 3:30

State Inspection Center
• Most Major Credit Cards Accepted
• National Accounts Welcome

GOODYEAR
CORSA GT
Great Handling & Mileage

| BLACKWALL SIZE | PRICE No Trade Needed | PRICE No Trade Needed |
|----------------|-----------------------|-----------------------|
| 155/70-13 | \$21.99 | \$21.99 |
| 155/70-14 | \$23.99 | \$23.99 |
| 155/70-15 | \$25.99 | \$25.99 |

BLACKWALL SIZE
155/70-13 \$21.99
155/70-14 \$23.99
155/70-15 \$25.99

GOODYEAR
CORSA GT
Great Handling & Mileage

| WHITEWALL SIZE | PRICE No Trade Needed | PRICE No Trade Needed |
|----------------|-----------------------|-----------------------|
| 155/70-13 | \$21.99 | \$21.99 |
| 155/70-14 | \$23.99 | \$23.99 |
| 155/70-15 | \$25.99 | \$25.99 |

WHITEWALL SIZE
155/70-13 \$21.99
155/70-14 \$23.99
155/70-15 \$25.99

GOODYEAR
EAGLE ST
Performance Radial for Imports That's Low on Price

| RAISED WHITE LETTER SIZE | PRICE No Trade Needed | PRICE No Trade Needed |
|--------------------------|-----------------------|-----------------------|
| 155/70-13 | \$21.99 | \$21.99 |
| 155/70-14 | \$23.99 | \$23.99 |
| 155/70-15 | \$25.99 | \$25.99 |

RAISED WHITE LETTER SIZE
155/70-13 \$21.99
155/70-14 \$23.99
155/70-15 \$25.99

GOODYEAR
EAGLE GT-4
High Performance Plus All Season Traction

| BLACK SERIATED LETTER SIZE | PRICE No Trade Needed | PRICE No Trade Needed |
|----------------------------|-----------------------|-----------------------|
| 155/70-13 | \$21.99 | \$21.99 |
| 155/70-14 | \$23.99 | \$23.99 |
| 155/70-15 | \$25.99 | \$25.99 |

BLACK SERIATED LETTER SIZE
155/70-13 \$21.99
155/70-14 \$23.99
155/70-15 \$25.99

COUPON
OIL FILTER, CHASSIS LUBE & OIL CHANGE
\$18
Lubricate chassis, drain oil and refill with up to 5 quarts of major brand motor oil, and install new oil filter.
Special diesel fuel may result in extra charges.

COUPON
ENGINE TUNE-UP
\$19.95
Includes computerized engine performance analysis. Check battery, starting, charging, combustion systems. Install new spark plugs, set timing, adjust carburetor (where applicable - extra charge if removal is necessary). Service 1 month or 1000 miles, whichever comes first.

COUPON
FUEL INJECTION SERVICE
\$49
Safety Removes Fuel Burning Deposits
Lubricates & Conditions the Injection System
Restores Accurate Injection Spray Patterns
Protects the System From Rust & Corrosion

GOODYEAR
TIRE & AUTO SERVICE
126 Washington Ave., Nutley
235-9202
Open Mon.-Fri. 7:30 - 5:30
Saturdays 7:30 - 3:30

State Inspection Center
• Most Major Credit Cards Accepted
• National Accounts Welcome

NEW JERSEY LOCATIONS
BERGENFIELD 385-3110 Bob Shapiro, Manager 256-5757
LITTLE FALLS 342-5602 Brian Kirk, Manager 672-6720
HACKENSACK 342-5602
ORANGE 672-6720
NUTLEY 126 Washington Avenue Kevin Kirk, Manager

NEW YORK LOCATIONS
STATEN ISLAND (212) 733-6341 (718) 442-4078
WHITESTONE (718) 767-7754 Ron Mancuso, Manager

PUBLIC NOTICE
Please take notice that Julio Delgado has appealed to the Belleville Board of Adjustment for a Variance from the terms of the Zoning Ordinance of the Township of Belleville so as to permit an addition to be added on to the premises located at 413 Corlandt Street, Belleville, New Jersey. The appeal is No. 698.

A public hearing has been ordered for April 2, 1991 at 7:30 p.m. in the Meeting Room, 201 Washington Avenue, Belleville, New Jersey.

Belleville so as to permit an addition to be added on to the premises located at 413 Corlandt Street, Belleville, New Jersey. The appeal is No. 698.

A public hearing has been ordered for April 2, 1991 at 7:30 p.m. in the Meeting Room, 201 Washington Avenue, Belleville, New Jersey.

Belleville so as to permit an addition to be added on to the premises located at 413 Corlandt Street, Belleville, New Jersey. The appeal is No. 698.

A public hearing has been ordered for April 2, 1991 at 7:30 p.m. in the Meeting Room, 201 Washington Avenue, Belleville, New Jersey.

Belleville so as to permit an addition to be added on to the premises located at 413 Corlandt Street, Belleville, New Jersey. The appeal is No. 698.

A public hearing has been ordered for April 2, 1991 at 7:30 p.m. in the Meeting Room, 201 Washington Avenue, Belleville, New Jersey.

Belleville so as to permit an addition to be added on to the premises located at 413 Corlandt Street, Belleville, New Jersey. The appeal is No. 698.

A public hearing has been ordered for April 2, 1991 at 7:30 p.m. in the Meeting Room, 201 Washington Avenue, Belleville, New Jersey.

Belleville so as to permit an addition to be added on to the premises located at 413 Corlandt Street, Belleville, New Jersey. The appeal is No. 698.

A public hearing has been ordered for April 2, 1991 at 7:30 p.m. in the Meeting Room, 201 Washington Avenue, Belleville, New Jersey.

Belleville so as to permit an addition to be added on to the premises located at 413 Corlandt Street, Belleville, New Jersey. The appeal is No. 698.

A public hearing has been ordered for April 2, 1991 at 7:30 p.m. in the Meeting Room, 201 Washington Avenue, Belleville, New Jersey.

Belleville so as to permit an addition to be added on to the premises located at 413 Corlandt Street, Belleville, New Jersey. The appeal is No. 698.

A public hearing has been ordered for April 2, 1991 at 7:30 p.m. in the Meeting Room, 201 Washington Avenue, Belleville, New Jersey.

Belleville so as to permit an addition to be added on to the premises located at 413 Corlandt Street, Belleville, New Jersey. The appeal is No. 698.

A public hearing has been ordered for April 2, 1991 at 7:30 p.m. in the Meeting Room, 201 Washington Avenue, Belleville, New Jersey.

Belleville so as to permit an addition to be added on to the premises located at 413 Corlandt Street, Belleville, New Jersey. The appeal is No. 698.

A public hearing has been ordered for April 2, 1991 at 7:30 p.m. in the Meeting Room, 201 Washington Avenue, Belleville, New Jersey.

Belleville so as to permit an addition to be added on to the premises located at 413 Corlandt Street, Belleville, New Jersey. The appeal is No. 698.

A public hearing has been ordered for April 2, 1991 at 7:30 p.m. in the Meeting Room, 201 Washington Avenue, Belleville, New Jersey.

Belleville so as to permit an addition to be added on to the premises located at 413 Corlandt Street, Belleville, New Jersey. The appeal is No. 698.

A public hearing has been ordered for April 2, 1991 at 7:30 p.m. in the Meeting Room, 201 Washington Avenue, Belleville, New Jersey.

Belleville so as to permit an addition to be added on to the premises located at 413 Corlandt Street, Belleville, New Jersey. The appeal is No. 698.

A public hearing has been ordered for April 2, 1991 at 7:30 p.m. in the Meeting Room, 201 Washington Avenue, Belleville, New Jersey.

Belleville so as to permit an addition to be added on to the premises located at 413 Corlandt Street, Belleville, New Jersey. The appeal is No. 698.

A public hearing has been ordered for April 2, 1991 at 7:30 p.m. in the Meeting Room, 201 Washington Avenue, Belleville, New Jersey.

Belleville so as to permit an addition to be added on to the premises located at 413 Corlandt Street, Belleville, New Jersey. The appeal is No. 698.

A public hearing has been ordered for April 2, 1991 at 7:30 p.m. in the Meeting Room, 201 Washington Avenue, Belleville, New Jersey.

Belleville so as to permit an addition to be added on to the premises located at 413 Corlandt Street, Belleville, New Jersey. The appeal is No. 698.

A public hearing has been ordered for April 2, 1991 at 7:30 p.m. in the Meeting Room, 201 Washington Avenue, Belleville, New Jersey.

Belleville so as to permit an addition to be added on to the premises located at 413 Corlandt Street, Belleville, New Jersey. The appeal is No. 698.

A public hearing has been ordered for April 2, 1991 at 7:30 p.m. in the Meeting Room, 201 Washington Avenue, Belleville, New Jersey.

Belleville so as to permit an addition to be added on to the premises located at 413 Corlandt Street, Belleville, New Jersey. The appeal is No. 698.

A public hearing has been ordered for April 2, 1991 at 7:30 p.m. in the Meeting Room, 201 Washington Avenue, Belleville, New Jersey.

Belleville so as to permit an addition to be added on to the premises located at 413 Corlandt Street, Belleville, New Jersey. The appeal is No. 698.

A public hearing has been ordered for April 2, 1991 at 7:30 p.m. in the Meeting Room, 201 Washington Avenue, Belleville, New Jersey.

Belleville so as to permit an addition to be added on to the premises located at 413 Corlandt Street, Belleville, New Jersey. The appeal is No. 698.

A public hearing has been ordered for April 2, 1991 at 7:30 p.m. in the Meeting Room, 201 Washington Avenue, Belleville, New Jersey.

Belleville so as to permit an addition to be added on to the premises located at 413 Corlandt Street, Belleville, New Jersey. The appeal is No. 698.

A public hearing has been ordered for April 2, 1991 at 7:30 p.m. in the Meeting Room, 201 Washington Avenue, Belleville, New Jersey.

Belleville so as to permit an addition to be added on to the premises located at 413 Corlandt Street, Belleville, New Jersey. The appeal is No. 698.

A public hearing has been ordered for April 2, 1991 at 7:30 p.m. in the Meeting Room, 201 Washington Avenue, Belleville, New Jersey.

Belleville so as to permit an addition to be added on to the premises located at 413 Corlandt Street, Belleville, New Jersey. The appeal is No. 698.

A public hearing has been ordered for April 2, 1991 at 7:30 p.m. in the Meeting Room, 201 Washington Avenue, Belleville, New Jersey.

Belleville so as to permit an addition to be added on to the premises located at 413 Corlandt Street, Belleville, New Jersey. The appeal is No. 698.

A public hearing has been ordered for April 2, 1991 at 7:30 p.m. in the Meeting Room, 201 Washington Avenue, Belleville, New Jersey.

Belleville so as to permit an addition to be added on to the premises located at 413 Corlandt Street, Belleville, New Jersey. The appeal is No. 698.

A public hearing has been ordered for April 2, 1991 at 7:30 p.m. in the Meeting Room, 201 Washington Avenue, Belleville, New Jersey.

Belleville so as to permit an addition to be added on to the premises located at 413 Corlandt Street, Belleville, New Jersey. The appeal is No. 698.

A public hearing has been ordered for April 2, 1991 at 7:30 p.m. in the Meeting Room, 201 Washington Avenue, Belleville, New Jersey.

Belleville so as to permit an addition to be added on to the premises located at 413 Corlandt Street, Belleville, New Jersey. The appeal is No. 698.

A public hearing has been ordered for April 2, 1991 at 7:30 p.m. in the Meeting Room, 201 Washington Avenue, Belleville, New Jersey.

Belleville so as to permit an addition to be added on to the premises located at 413 Corlandt Street, Belleville, New Jersey. The appeal is No. 698.

A public hearing has been ordered for April 2, 1991 at 7:30 p.m. in the Meeting Room, 201 Washington Avenue, Belleville, New Jersey.

Belleville so as to permit an addition to be added on to the premises located at 413 Corlandt Street, Belleville, New Jersey. The appeal is No. 698.

A public hearing has been ordered for April 2, 1991 at 7:30 p.m. in the Meeting Room, 201 Washington Avenue, Belleville, New Jersey.

Belleville so as to permit an addition to be added on to the premises located at 413 Corlandt Street, Belleville, New Jersey. The appeal is No. 698.

A public hearing has been ordered for April 2, 1991 at 7:30 p.m. in the Meeting Room, 201 Washington Avenue, Belleville, New Jersey.

Belleville so as to permit an addition to be added on to the premises located at 413 Corlandt Street, Belleville, New Jersey. The appeal is No. 698.

A public hearing has been ordered for April 2, 1991 at 7:30 p.m. in the Meeting Room, 201 Washington Avenue, Belleville, New Jersey.

Belleville so as to permit an addition to be added on to the premises located at 413 Corlandt Street, Belleville, New Jersey. The appeal is No. 698.

A public hearing has been ordered for April 2, 1991 at 7:30 p.m. in the Meeting Room, 201 Washington Avenue, Belleville, New Jersey.

Belleville so as to permit an addition to be added on to the premises located at 413 Corlandt Street, Belleville, New Jersey. The appeal is No. 698.

A public hearing has been ordered for April 2, 1991 at 7:30 p.m. in the Meeting Room, 201 Washington Avenue, Belleville, New Jersey.

Belleville so as to permit an addition to be added on to the premises located at 413 Corlandt Street, Belleville, New Jersey. The appeal is No. 698.

A public hearing has been ordered for April 2, 1991 at 7:30 p.m. in the Meeting Room, 201 Washington Avenue, Belleville, New Jersey.

Belleville so as to permit an addition to be added on to the premises located at 413 Corlandt Street, Belleville, New Jersey. The appeal is No. 698.

A public hearing has been ordered for April 2, 1991 at 7:30 p.m. in the Meeting Room, 201 Washington Avenue, Belleville, New Jersey.

Belleville so as to permit an addition to be added on to the premises located at 413 Corlandt Street, Belleville, New Jersey. The appeal is No. 698.

A public hearing has been ordered for April 2, 1991 at 7:30 p.m. in the Meeting Room, 201 Washington Avenue, Belleville, New Jersey.

Belleville so as to permit an addition to be added on to the premises located at 413 Corlandt Street, Belleville, New Jersey. The appeal is No. 698.

A public hearing has been ordered for April 2, 1991 at 7:30 p.m. in the Meeting Room, 201 Washington Avenue, Belleville, New Jersey.

Belleville so as to permit an addition to be added on to the premises located at 413 Corlandt Street, Belleville, New Jersey. The appeal is No. 698.

A public hearing has been ordered for April 2, 1991 at 7:30 p.m. in the Meeting Room, 201 Washington Avenue, Belleville, New Jersey.

Belleville so as to permit an addition to be added on to the premises located at 413 Corlandt Street, Belleville, New Jersey. The appeal is No. 698.

A public hearing has been ordered for April 2, 1991 at 7:30 p.m. in the Meeting Room, 201 Washington Avenue, Belleville, New Jersey.

Belleville so as to permit an addition to be added on to the premises located at 413 Corlandt Street, Belleville, New Jersey. The appeal is No. 698.

A public hearing has been ordered for April 2, 1991 at 7:30 p.m. in the Meeting Room, 201 Washington Avenue, Belleville, New Jersey.

Belleville so as to permit an addition to be added on to the premises located at 413 Corlandt Street, Belleville, New Jersey. The appeal is No. 698.

A public hearing has been ordered for April 2, 1991 at 7:30 p.m. in the Meeting Room, 201 Washington Avenue, Belleville, New Jersey.

Belleville so as to permit an addition to be added on to the premises located at 413 Corlandt Street, Belleville, New Jersey. The appeal is No. 698.

A public hearing has been ordered for April 2, 1991 at 7:30 p.m. in the Meeting Room, 201 Washington Avenue, Belleville, New Jersey.

Belleville so as to permit an addition to be added on to the premises located at 413 Corlandt Street, Belleville, New Jersey. The appeal is No. 698.

A public hearing has been ordered for April 2, 1991 at 7:30 p.m. in the Meeting Room, 201 Washington Avenue, Belleville, New Jersey.

Belleville so as to permit an addition to be added on to the premises located at 413 Corlandt Street, Belleville, New Jersey. The appeal is No. 698.

A public hearing has been ordered for April 2, 1991 at 7:30 p.m. in the Meeting Room, 201 Washington Avenue, Belleville, New Jersey.

Belleville so as to permit an addition to be added on to the premises located at 413 Corlandt Street, Belleville, New Jersey. The appeal is No. 698.

A public hearing has been ordered for April 2, 1991 at 7:30 p.m. in the Meeting Room, 201 Washington Avenue, Belleville, New Jersey.

Belleville so as to permit an addition to be added on to the premises located at 413 Corlandt Street, Belleville, New Jersey. The appeal is No. 698.

A public hearing has been ordered for April 2, 1991 at 7:30 p.m. in the Meeting Room, 201 Washington Avenue, Belleville, New Jersey.

Belleville so as to permit an addition to be added on to the premises located at 413 Corlandt Street, Belleville, New Jersey. The appeal is No. 698.

A public hearing has been ordered for April 2, 1991 at 7:30 p.m. in the Meeting Room, 201 Washington Avenue, Belleville, New Jersey.

Belleville so as to permit an addition to be added on to the premises located at 413 Corlandt Street, Belleville, New Jersey. The appeal is No. 698.

A public hearing has been ordered for April 2, 1991 at 7:30 p.m. in the Meeting Room, 201 Washington Avenue, Belleville, New Jersey.

Belleville so as to permit an addition to be added on to the premises located at 413 Corlandt Street, Belleville, New Jersey. The appeal is No. 698.

A public hearing has been ordered for April 2, 1991 at 7:30 p.m. in the Meeting Room, 201 Washington Avenue, Belleville, New Jersey.

Belleville so as to permit an addition to be added on to the premises located at 413 Corlandt Street, Belleville, New Jersey. The appeal is No. 698.

A public hearing has been ordered for April 2, 1991 at 7:30 p.m. in the Meeting Room, 201 Washington Avenue, Belleville, New Jersey.

Belleville so as to permit an addition to be added on to the premises located at 413 Corlandt Street, Belleville, New Jersey. The appeal is No. 698.

A public hearing has been ordered for April 2, 1991 at 7:30 p.m. in the Meeting Room, 201 Washington Avenue, Belleville, New Jersey.

Belleville so as to permit an addition to be added on to the premises located at 413 Corlandt Street, Belleville, New Jersey. The appeal is No. 698.

A public hearing has been ordered for April 2, 1991 at 7:30 p.m. in the Meeting Room, 201 Washington Avenue, Belleville, New Jersey.

Belleville so as to permit an addition to be added on to the premises located at 413 Corlandt Street, Belleville, New Jersey. The appeal is No. 698.

A public hearing has been ordered for April 2, 1991 at 7:30 p.m. in the Meeting Room, 201 Washington Avenue, Belleville, New Jersey.

Belleville so as to permit an addition to be added on to the premises located at 413 Corlandt Street, Belleville, New Jersey. The appeal is No. 698.

A public hearing has been ordered for April 2, 1991 at 7:30 p.m. in the Meeting Room, 201 Washington Avenue, Belleville, New Jersey.

Belleville so as to permit an addition to be added on to the premises located at 413 Corlandt Street, Belleville, New Jersey. The appeal is No. 698.

A public hearing has been ordered for April 2, 1991 at 7:30 p.m. in the Meeting Room, 201 Washington Avenue, Belleville, New Jersey.

Belleville so as to permit an addition to be added on to the premises located at 413 Corlandt Street, Belleville, New Jersey. The appeal is No. 698.

A public hearing has been ordered for April 2, 1991 at 7:30 p.m. in the Meeting Room, 201 Washington Avenue, Belleville, New Jersey.

Belleville so as to permit an addition to be added on to the premises located at 413 Corlandt Street, Belleville, New Jersey. The appeal is No. 698.

A public hearing has been ordered for April 2, 1991 at 7:30 p.m. in the Meeting Room, 201 Washington Avenue, Belleville, New Jersey.

Belleville so as to permit an addition to be added on to the premises located at 413 Corlandt Street, Belleville, New Jersey. The appeal is No. 698.

A public hearing has been ordered for April 2, 1991 at 7:30 p.m. in the Meeting Room, 201 Washington Avenue, Belleville, New Jersey.

Belleville so as to permit an addition to be added on to the premises located at 413 Corlandt Street, Belleville, New Jersey. The appeal is No. 698.

A public hearing has been ordered for April 2, 1991 at 7:30 p.m. in the Meeting Room, 201 Washington Avenue, Belleville, New Jersey.

Belleville so as to permit an addition to be added on to the premises located at 413 Corlandt Street, Belleville, New Jersey. The appeal is No. 698.

A public hearing has been ordered for April 2, 1991 at 7:30 p.m. in the Meeting Room, 201 Washington

THERE'S NO PLACE LIKE HOME

180 Centre St.
Nutley, N.J. 07110
667-3440

GEORGE E. MACMUNN Co.
REALTORS

100 Woodport Road
Sparta, N.J. 07871
729-8727



OPEN HOUSE - SUNDAY - 1-4 PM - NUTLEY, 49 E. WHITE TER. (Off Washington Ave.) Young home on prof. landscaped lot. Features incl CA, Fam. Rm. w/frpl., 12x22 DR, beautiful oak kit, 4 BR's, 3 1/2 baths, spac. rec. rm. w/wet bar. Beautiful condition!! ASKING \$259,900.



NUTLEY - One floor living at its best. Radcliffe School area, 3 BR's, formal DR, eat-in kit, den, 2 baths, att. garage. ASKING \$184,900.

**DO YOU KNOW
WHAT YOUR
HOUSE IS
WORTH
TODAY?**

We offer a current market
value analysis...
Just pick up the phone & call.



SPARTA - JUST LISTED - ASKING \$149,900. Bring the kids! Private lake community - 4 BR's (1 queen size), 2 full mod baths, Fam. Rm., LR w/frpl & beamed ceiling, 2 car gar. Taxes only \$2,471. Terrific cond.!



SPARTA - LAKE MOHAWK - ASKING \$91,900. Five rooms on one floor, mod kit & bath, cath. LR w/frpl., nice area.

THE PRICES ARE RIGHT

NUTLEY
4 bedrooms, 2 1/2 baths, family room on first. Lovely Colonial in Spring Garden section.

ALSO
Maintenance free Colonial with new kitchen, finished basement, deep lot. One of Spring Garden's finest.

BLOOMFIELD
BOTH IN BROOKDALE
Just reduced to \$172,500. 7 rooms, 2 full baths, rear glass enclosed porch.

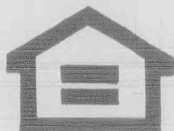
ALSO
At \$169,000 this immaculate 3 bedroom, 2 bath home plus family room will be the next to go.

EVERYONE KNOWS

GEORGE T. BOWES
YOUR NUTLEY REALTOR SINCE 1933
681 FRANKLIN AVE. NUTLEY 667-3376

Tax Filing Reminders

- ✓ Write your correct social security number clearly on your tax return to avoid delay of your refund check.
- ✓ Be sure your completed tax form has enough postage.
- ✓ Double-check your math before mailing your return.
- ✓ Use the proper tax table for your income and filing status.
- ✓ Use both the peel-off label and envelope (if provided) from your tax package. Make needed address changes on the label.
- ✓ Sign and date your tax return (if filing jointly, your spouse also signs).



**EQUAL HOUSING
OPPORTUNITY**

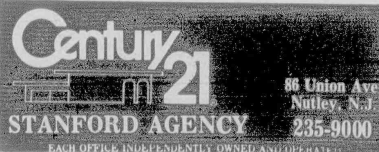
We are pledged to the letter and spirit of U.S. policy for the achievement of equal housing opportunity through out the Nation. We encourage and support an affirmative advertising and marketing program in which there are no barriers to obtaining housing because of race, color, religion, sex, handicap, familial status, or national origin.



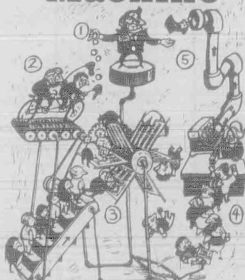
BELLEVILLE COLONIAL

Large 3-Bedroom Colonial. Maintenance-free brick exterior, tiled kitchen, LR w/fireplace, formal DR, 1 1/2 bath, fin. basement, parquet floors throughout. Large 2-car garage. Close to trans., stores & School No. 3.

Hurry, it won't last at \$149,900



The Advertising Machine



How advertising really works: 1) Sam the retailer pays the newspaper ad rep who 2) gets the advertising to the reader who 3) reads Sam's ad and they are sent to Sam's store to buy some goods.

If you wish to reap the rewards, just as Sam has, call your advertising representative today at 667-2700!

ORECHIO PUBLICATIONS & TV

The Home Front

By Nina Kaeser



Bringing the outdoors in: garden decor has moved into the parlor. Large urns, garden benches of wrought iron, and brass watering cans are favorite accessories, best if they don't look too new.

Chemical paint remover should be stroked on in thick layers, without brushing back and forth. Work only a small area at a time and scrape off paint residue as soon as it's soft all the way through.

Planning a new deck or other outdoor project for this spring? The best woods to use are redwood, cedar, teak, and pressure-treated lumber. The first three are naturally decay- and insect-resistant; the last is a lower-cost alternative.

Today's low-voltage lighting kits are relatively inexpensive and easy for a non-expert to install. The lighting system's transformer reduces 120-volt household current to a more manageable 12 volts.

The easiest way to double the size of your living room? Mirror one wall to expand the visual effect.

The easiest way to find your dream house is with the help of the real estate pros at Century 21 Stanford Agency, 86 Union Ave., Nutley, 235-9000.



EQUAL PROFESSIONAL SERVICE

- in the sale or rental of housing
- in advertising the sale or rental of housing
- in standing ready to enter broker-client relationships
- in the providing of real estate brokerage services

WE SUBSCRIBE to the policy that equal opportunity in the acquisition of housing can best be accomplished through leadership, example, education and the mutual cooperation of the real estate industry and the public.

BLOOMFIELD, GLEN RIDGE, NUTLEY & BELLEVILLE
BOARD OF REALTORS
375 Broad Street
Bloomfield, N.J. 07003
(201) 743-5114

Big Brand Bash



Dolly Madison
all natural
Ice Cream
REGULAR, LIGHT OR FAT FREE
OR FROZEN YOGURT
1.69

MINUTE MAID REG. OR COUNTRY STYLE
Premium Choice Orange Juice 64-oz. cont. **1.99**

WHY PAY MORE?
Oscar Mayer Sliced Bacon 1-lb. pkg. **2.50**

1 1/4 BUSHEL, ASST. COLORS
Rubbermaid Laundry Basket each **2.99**

The MEATing® Place

U.S.D.A. CHOICE BEEF
Boneless Bottom Round Roast 1-lb. **1.89**
SAVE 1.30 A LB.

SAVE 1.30 A LB., BONELESS SEAMED
Eye Round Roast 1-lb. **2.69**
THE ORIGINAL LONDON BROIL
Beef Flank Steak 1-lb. **3.79**
U.S.D.A. CHOICE BEEF
Round Cubed Steak 1-lb. **2.99**
FRESH AMERICAN, BLADE CUT
Shoulder Lamb Chops 1-lb. **2.29**
COOK'S LOW SALT HAM & WATER PRODUCT
Shank Portion Smoked Ham 1-lb. **1.19**

The Dairy Place

LIGHTLY SALTED OR SWEET
ShopRite Butter 1-lb. **1.39**

ASSORTED VARIETIES
Minute Maid Ades 64-oz. cont. **.74**

ASSORTED VARIETIES
Breyers Yogurt 8-oz. conts. **3.00**

QUARTERS
Land O Lakes Margarine 1-lb. pkg. **.69**

The Appy Place

LAND O LAKES, STORE SLICED
American Cheese 1-lb. **2.49**

ShopRite STORE SLICED
Petite Turkey Breast 1-lb. **3.99**

HORMEL STORE SLICED
DuLusso Genoa 1-lb. **5.99**

STORE SLICED
Italian Roast Beef 1-lb. **4.99**

Chef's Express WHERE AVAILABLE
PORK, EGG, BOLT, 2-oz. ROAST PORK, FRIED RICE
1.99

WHY PAY MORE?
Chef's Express Stromboli 13-oz. pkg. **2.99**

ShopRite Coupon
WITH THIS COUPON
Any Brand 5-Lb. Matzos
2.99
018540 ENTER SAVE 1.00

Prices effective in New Jersey, North of Trenton (ex. Montague, N.J.) including Kingston and E. Windsor, N.J. & Rockland & Richmond Counties, N.Y. In order to assure a sufficient supply of sale items for all our customers, we must reserve the right to limit purchase to 4 of any sale items, except where otherwise noted. Not responsible for typographical errors. None sold to other retailers or wholesalers. Artwork does not necessarily represent items on sale. It is for display purposes only. Sunday sales subject to local laws. Copyright WAKEFERN FOOD CORPORATION, 1991. Effective Sun. Mar. 3 thru Sat. Mar. 9, 1991.



REGULAR OR BBQ
Wise Potato Chips 6-oz. bag **.89**

CHUNKY OR CREAMY
Skippy Peanut Butter 1-lb. 2-oz. jar **1.99**

WHY PAY MORE?
Smucker's Strawberry Jam 2-lb. jar **1.99**

ALL VAR. BARS 10-CT. OR
Slim-Fast Powder 15-oz. can **2.99**

The Grocery Place

U.S.D.A. CHOICE BEEF
Boneless Rump Roast 1-lb. **2.19**
SAVE 1.30 A LB.

ANY SIZE PKG., NOT LESS THAN 85%
Extra Lean Ground Beef 1-lb. **1.99**
THIN CUT FROM LEG
Veal Scallopini 1-lb. **6.99**
CENTER CUT
Boneless Pork Chops 1-lb. **3.99**
FROM RIB END
Boneless Pork Loin Roast 1-lb. **2.29**
FROM LOIN END
Boneless Pork Cutlets 1-lb. **2.59**

The Grocery Place

7-oz. JAR REG. OR DECAF. INSTANT COFFEE
Taster's Choice 1-lb. **4.99**
ShopRite Sale Price
Less PRICE PLUS
club Discount
FINAL COST **3.99**

REG. OR AUTO Drip (EXCEPT DECAF)
Savarin Coffee 1-lb. can **1.99**

REGULAR OR REDUCED CALORIE
ShopRite Mayonnaise 1-qt. jar **.99**

FLAVORED
Colonna Bread Crumbs 1-lb. 8-oz. can **.99**

March Is Frozen Food Month

PATTIES, CHUNKS OR NUGGETS
Country Skillet Chicken 12-oz. pkg. **1.49**

GORTON'S BATTER DIPPED OR CRUNCHY
Fish Filets or Sticks 7-oz. pkg. **1.19**

STIR FRY, CON QUESO, NY CREAMED SPINACH OR
Pictsweet Vegetables 14-oz. pkg. **.89**

ASST. VAR. BAGELLES OR
Lender's Bagels 9 to 12-oz. pkg. **.89**

Health & Beauty Aids

ANTISEPTIC
ShopRite Mouthwash 32-oz. bl. **.99**

ALL VAR. SHAMPOO OR CONDITIONER
Salon Selectives 15-oz. bl. **1.99**

ShopRite Coupon
WITH THIS COUPON
7-Up or Cherry 7-Up
.89
REG. OR DIET 2-LTR. BTL. PLUS 25¢ WHERE REG. **1.14**
018380 ENTER SAVE

Prices effective in New Jersey, North of Trenton (ex. Montague, N.J.) including Kingston and E. Windsor, N.J. & Rockland & Richmond Counties, N.Y. In order to assure a sufficient supply of sale items for all our customers, we must reserve the right to limit purchase to 4 of any sale items, except where otherwise noted. Not responsible for typographical errors. None sold to other retailers or wholesalers. Artwork does not necessarily represent items on sale. It is for display purposes only. Sunday sales subject to local laws. Copyright WAKEFERN FOOD CORPORATION, 1991. Effective Sun. Mar. 3 thru Sat. Mar. 9, 1991.

STOCK-UP AND SAVE!



12 OZ. 201, 41 201, 81 201, 101 201
Ronzoni Pastas 1-lb. boxes **2.99**

DOLE
Pineapple Juice 1-qt. 14-oz. can **.99**

ASSORTED VARIETIES
Gatorade Drinks 1-qt. 14-oz. bl. **.99**

NESTLE
Goobers or Raisinets 7-oz. bag **.79**

The Produce Place

VITAMIN C
Florida Strawberries 1-qt. cont. **1.89**

THOMPSON GREEN, RED FLAME OR BLACK
Seedless Grapes 1-lb. **1.29**
VITAMIN C, 48 SIZE WHITE
Florida Grapefruit 4 for **.99**
WASH. STATE EX. FANCY 100 SIZE
Red Delicious Apples 1-lb. **.89**
B' VITAMINS, WASH. STATE, 100 SIZE
Anjou Pears 1-lb. **.89**
LOW IN CALORIES, LARGE SIZE
Honeydew Melons ea. **2.49**



175-COUNT BOX
Kleenex Tissue .99
ShopRite Sale Price
Less PRICE PLUS
club Discount
FINAL COST **.79**

IN OIL OR WATER
Star-Kist Chunk White Tuna 6 1/2-oz. can **.89**

ITALIAN STYLE
Tutorosso Tomatoes 2-lb. 3-oz. can **.79**

REG. OR UNSCENTED
Tide Liquid Detergent 1-gal. bl. **5.99**

The Produce Place

VITAMIN A & C, LARGE 14 SIZE
California Broccoli 1-lb. **.99**

VITAMINS A & C
Fresh Asparagus 1-lb. **1.49**
TOPS IN VITAMIN A
Fresh Carrots 5-lb. bag **1.69**
LOW CALORIES
Royal Purple Eggplant 1-lb. **.79**
HIGH CAROTENE
Southern Yams 3-lb. **1.00**

The Fresh Fish Market

PACIFIC
Fresh Dover Sole Fillet 1-lb. **4.99**

U.S. GRADE A FRESH, FARM RAISED
Fillet of Southern Catfish 1-lb. **3.99**

FROZEN OR THAWED, 36-40 PER LB.
Large White Shrimp 1-lb. **5.99**

U.S. GRADE A, WHOLE CLEANED
Fresh Lake Carp 1-lb. **1.99**

The Deli Place

WHY PAY MORE?
Hygrade's Meat Franks 1-lb. pkg. **.99**

WHY PAY MORE?
Hormel Canned Ham 5-lb. can **11.99**

REG. OR LITE MEAT
Ballpark Franks 1-lb. pkg. **1.99**

ASSORTED VARIETIES
Claussen Pickles 1-qt. jar **1.99**

The Bakery Place

ASSORTED VARIETIES
Manischewitz Rye Bread 16-oz. loaf **.79**

JUMBO OR SANDWICH WHITE
Country Hearth Bread 22-oz. loaf **.74**

WHY PAY MORE?
Smucker's Grape Jelly or Jam 1/2-qt. jar **.99**

ASSORTED VARIETIES
Viva Spaghetti Sauce 1-pt. 10-oz. jar **.79**

NO BOIL
Defino Lasagna 8-oz. box **.64**

ShopRite CHOC. CHIP OR PECAN
Chips-A-Lot Cookies 1-lb. 3-oz. pkg. **1.79**

MORTON
Macaroni & Cheese 2-8-oz. pks. **1.19**

ENTER AT ShopRite TO WIN A NEW
FRIGIDAIRE FREEZER
MORE THAN 900 FREEZERS WILL BE
AWARDED (5 WINNERS PER STORE)
SEE STORE FOR DETAILS & ENTRY BLANK

General Merchandise

10" PRECISION II NON-STICK
Weaver Sauté Pan each **9.99**

CHARLIE BROWN'S CYCLOPEDIA
Volumes #2 thru 5 each **2.99**

ShopRite Coupon
WITH THIS COUPON
Fresh Strawberries
1.49
1-OT. CONT. **1.49**
018390 ENTER SAVE .40

Prices effective in New Jersey, North of Trenton (ex. Montague, N.J.) including Kingston and E. Windsor, N.J. & Rockland & Richmond Counties, N.Y. In order to assure a sufficient supply of sale items for all our customers, we must reserve the right to limit purchase to 4 of any sale items, except where otherwise noted. Not responsible for typographical errors. None sold to other retailers or wholesalers. Artwork does not necessarily represent items on sale. It is for display purposes only. Sunday sales subject to local laws. Copyright WAKEFERN FOOD CORPORATION, 1991. Effective Sun. Mar. 3 thru Sat. Mar. 9, 1991.

VALUABLE COUPON
Cannot be used in conjunction with any other coupon
MFR. 20AB0
WITH THIS COUPON
Kool Aid Coolers 3.99
015700 ENTER SAVE 2.00

Prices effective in New Jersey, North of Trenton (ex. Montague, N.J.) including Kingston and E. Windsor, N.J. & Rockland & Richmond Counties, N.Y. In order to assure a sufficient supply of sale items for all our customers, we must reserve the right to limit purchase to 4 of any sale items, except where otherwise noted. Not responsible for typographical errors. None sold to other retailers or wholesalers. Artwork does not necessarily represent items on sale. It is for display purposes only. Sunday sales subject to local laws. Copyright WAKEFERN FOOD CORPORATION, 1991. Effective Sun. Mar. 3 thru Sat. Mar. 9, 1991.